



## Information on Child Abuse or Neglect for Calendar Year 2002

This report provides information from the Nebraska Department of Health and Human Services (HHS) about child abuse or neglect in Nebraska for calendar year 2002. It also provides statutory child protective service references; responsibilities of law enforcement, the courts, and HHS; an overview of steps followed as cases go through the HHS Protection and Safety System; information about HHS' collaborations around domestic violence; and a glossary of terms.

### In calendar year 2002:

- ❖ **Investigations:** 7,328 reports of child abuse or neglect were investigated by HHS, compared to 8,439 in 1993. This represents a 13.2 percent decrease in the total number of reports investigated since 1993. Compared to 7,153 in 2001, this represents a 2.4 percent increase in the total number of reports investigated.
- ❖ **Substantiated Cases:** 2,192 allegations of abuse or neglect were substantiated, compared to 3,374 in 1993. This is a 35.0 percent decline in substantiated cases since 1993. Compared to 2,060 in 2001, this is a 6.4 percent increase in substantiated cases.
- ❖ **Number of children involved:** 3,454 children were involved, compared to 5,726 in 1993. This is a 39.7 percent decline compared to 1993. Compared to 3,268 in 2001, this is a 5.7 percent increase in involved children.

Statewide Statistics, Calendar Years 1993 - 2002			
Calendar Year	Total Cases Investigated	Number of Substantiated Cases	Involved Children
1993	8,439	3,374	5,726
1994 <sup>1</sup>	8,405	2,605	4,514
1995	7,858	2,072	3,510
1996	8,346	2,135	3,612
1997	8,140	2,326	4,054
1998	8,272	2,482	4,219
1999	8,455	2,183	3,475
2000 <sup>2</sup>	8,254	1,932	3,074
2001 <sup>3</sup>	7,153	2,060	3,268
2002	7,328	2,192	3,454

- 1 April 1994 policy memo clarified "preponderance of evidence" and mandated use of certified notice of finding to alleged perpetrators.
- 2 The difference in the number of cases between 1999 and 2000 may be related to their dates of collection. 1999 data was collected on 7/31/00 and 2000 data on 6/7/01.
- 3 The difference in the number of cases investigated between 2000 and 2001 is likely related to the fact that a portion of the investigations were "estimated" in 2000, but not in 2001.

### A Typical Allegation of Child Abuse or Neglect:

- ❖ Is made through an anonymous phone call
- ❖ Alleges physical neglect
- ❖ Involves 1.6 children who are generally:
  - ◆ White
  - ◆ Female
  - ◆ Between 0 and 4 years of age
- ❖ Is determined to be unfounded



## Statutory Child Protective Service References

- ❖ All citizens are required by state law to report suspected child abuse or neglect by calling 1-800-652-1999 or contacting law enforcement.
- ❖ Nebraska Revised Statutes sections 28-710 through 28-727 define the terms “abuse” and “neglect” and outline reporting responsibilities. Responsibilities for law enforcement and Health and Human Services are described.
- ❖ Nebraska Revised Statutes section 43-407 sets out the powers and duties of the Department of Health and Human Services relating to the protection of children.

**The Department of Health and Human Services (HHS) is the state agency responsible for child welfare and child protection.** Services are provided to: children and families with issues involving abuse, neglect, and dependency; and youth who violate the law or have mental health issues. Effective January 2002, Protection and Safety workers serve families statewide in HHS’ three Service Areas, which were created in 2002. (A map of the former Service Area boundaries and a map of the current Service Area boundaries, can be found on page 4.) A five-member Policy Cabinet, appointed by the Governor, oversees the entire Health and Human Services System. This Policy Cabinet is made up of the directors from the three agencies, the Policy Secretary, and the Chief Medical Officer.

### Law Enforcement and the Courts’ Responsibilities in Child Abuse or Neglect Cases

Different entities become involved at various times in child abuse cases. Only law enforcement or judges have authority to remove children from their homes. County attorneys are responsible for filing charges against those who victimize children. Law enforcement may be involved in investigations in which HHS does not become involved and vice versa depending on local protocols established between HHS and law enforcement.

### Health and Human Services Responsibilities in Child Abuse or Neglect Cases

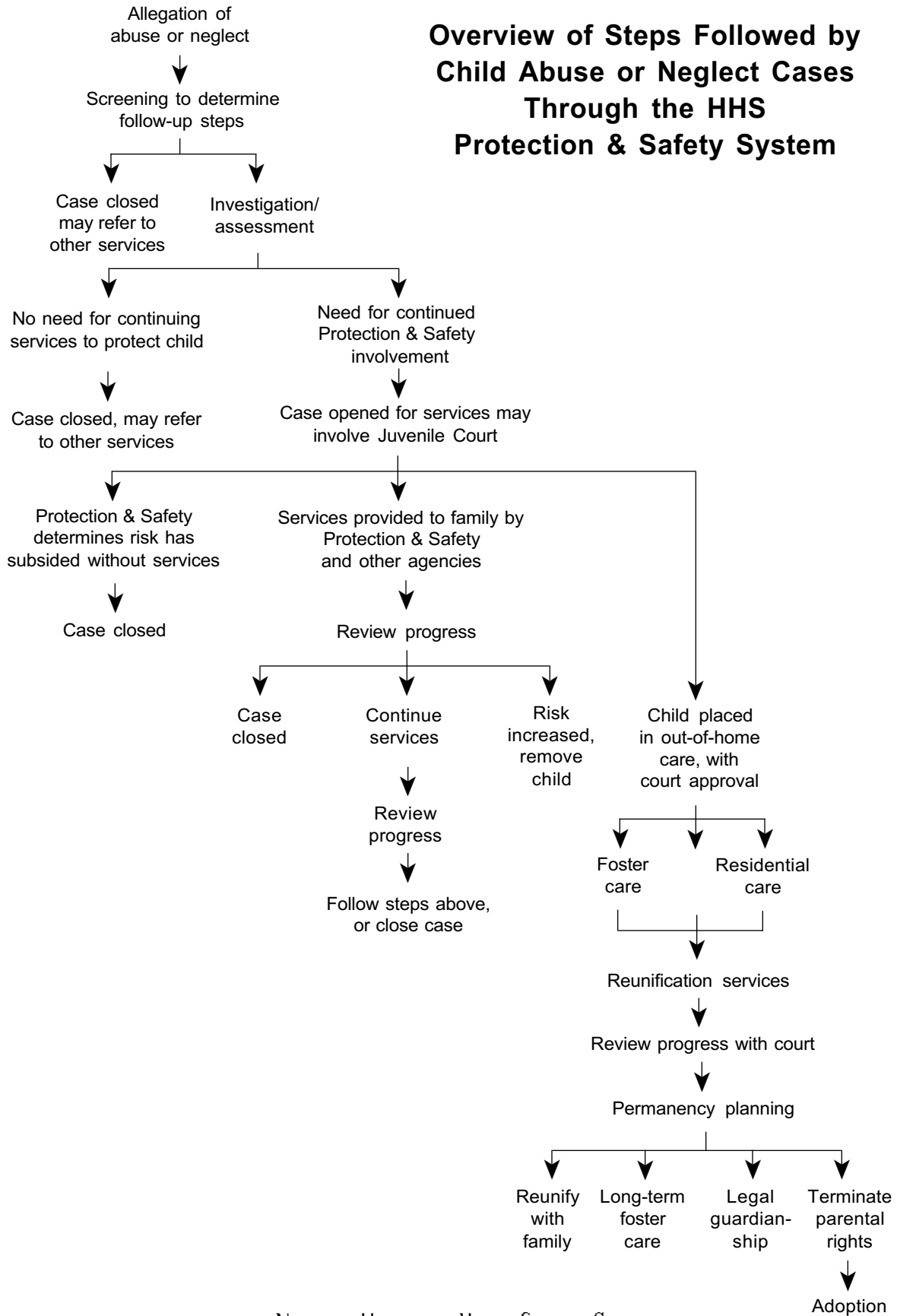
The Department of Health and Human Services develops policy and guidelines to conduct work relating to abuse or neglect. In investigations where HHS becomes involved, employees assess the risk to the child and other children in the family, provide services to the child and may provide counseling and other family support services for other members of the family. If children are removed from their homes by law enforcement or the courts, HHS is usually given custody and responds by finding an appropriate temporary placement for the children.

### Context for the Data in This Report:

- ❖ *Data Source:* All information is from N-FOCUS, HHS’ Nebraska Family On-Line Client User System, developed in part with Federal Statewide Automated Child Welfare Information System (SACWIS) funding. All States are required to submit data on child abuse or neglect cases, foster care and adoption. N-FOCUS provides more information than ever before, particularly for reports or referrals made regarding abuse or neglect.
- ❖ *Time period for this report:* The data relates to reports received during calendar year 2002. However, not all were completed in 2002.



## Overview of Steps Followed by Child Abuse or Neglect Cases Through the HHS Protection & Safety System



NEBRASKA HEALTH AND HUMAN SERVICES SYSTEM

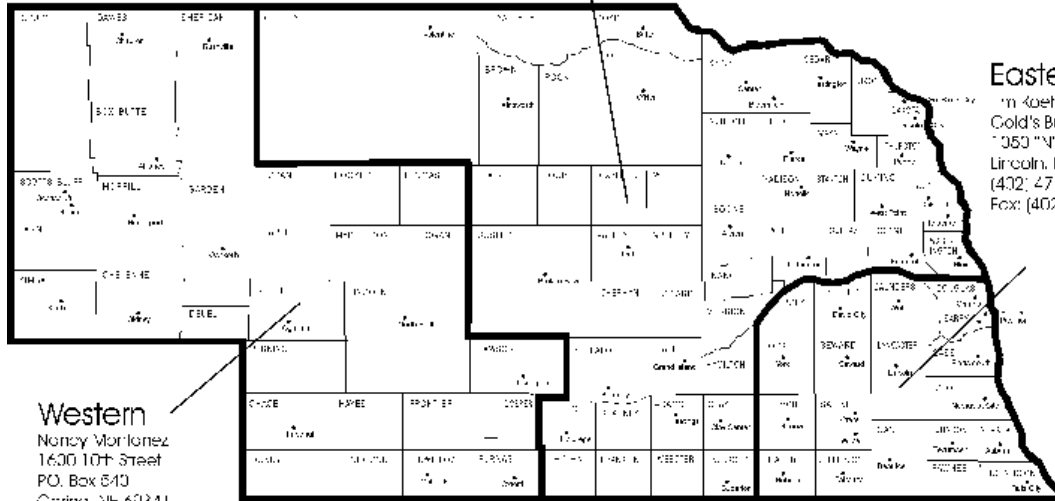


**Nebraska Health and Human Services System  
Service Areas and Offices  
January 2002**

**Central**  
Joan Albin  
239 N. 5th Street  
PO Box 339  
Norfolk, NE 68702  
(402) 370-3120  
Fax: (402) 370-3497

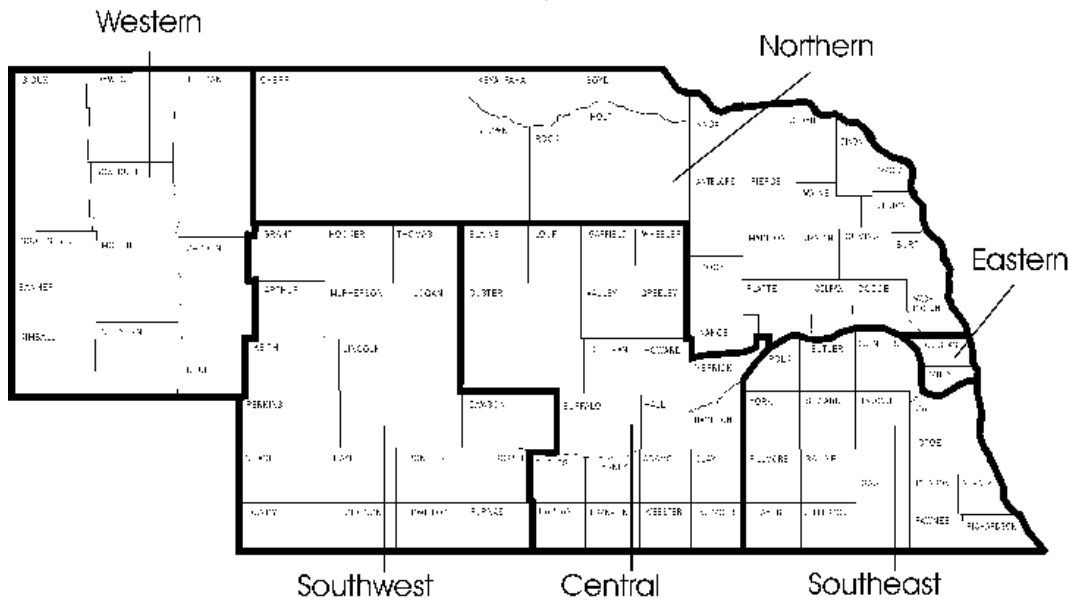
**Eastern**  
Tom Koehn  
Gold's Building  
1050 "N" Street  
Lincoln, NE 68508  
(402) 471-5334  
Fax: (402) 471-5144

**Western**  
Nancy Morlonez  
1600 10th Street  
PO. Box 613  
Gering, NE 69341  
(309) 436-6579  
Fax: (309) 436-6547



Map 5013 102

**Former Department of Health and Human Services  
Service Area Map  
January, 1998**



Map 101 Rev 995



## **HHS/Domestic Violence Collaboration**

There is a strong correlation between domestic violence and child abuse or neglect. Domestic violence and child maltreatment often occur simultaneously. Problems resulting from children who witness domestic violence have recently gained national attention, showing that the overlap of violence in families is common. The following statistics demonstrate the impact of domestic violence on children (Carter, J. 1999):

- ❖ 50% of men who frequently abused their wives also frequently abused their children.
- ❖ Domestic violence is the single major precursor to fatal cases of child abuse or neglect.
- ❖ The rate of child abuse by battered women is at least double that of mothers not being beaten by a partner.
- ❖ Men who witnessed domestic violence as a child were twice as likely to be abusive toward a partner than men whose parents were nonviolent.
- ❖ 50% of all homeless women and children in the US are fleeing domestic violence.

These facts point to the need for Child Protection and Safety workers and battered women's advocates to work together for families.

HHS partnered with the State Domestic Violence and Sexual Assault Coalition, various domestic violence programs across the state, and Nebraska Voices for Children to produce guidebook procedures that would both protect children and serve domestic violence victims. The tangible results of these meetings have been:

- ❖ The HHS Protection and Safety Policy and Guidebook material were updated;
- ❖ A "Resource Manual" regarding Protection and Safety, Domestic Violence programs and the Employment First program was developed and distributed to all staff;
- ❖ A Protection and Safety (PS) and Domestic Violence (DV) Guide was developed and distributed to all P&S and DV Staff. This includes the latest articles regarding: domestic violence/protection and safety collaboration; recommended interviewing; evaluation and safety planning tools; and tips on working with families where domestic violence has been identified;
- ❖ Cross training was delivered jointly to all P&S and domestic violence staff across the state;
- ❖ A training video was developed;
- ❖ The Domestic Violence Coalition, Nebraska Voices for Children, and the Nebraska Department of Health and Human Services have collaborated on a grant. This grant has helped fund many of the above projects. A pilot site in Columbus, Nebraska hired a staff person to work in both Protection and Safety and the local domestic violence program, and was assigned to assist in Protection and Safety cases where domestic violence is identified. In 2002, the collaborative programs between Domestic Violence, Child Protective Services, and Employment First expanded and now include 9 sites across the State of Nebraska.



# Glossary of Terms

**Central Register:** The Central Register is a list of individuals identified as having been responsible for child abuse or neglect following an investigation either by law enforcement, the Department, or both.

**Central Registry:** Data pertaining to child abuse or neglect.

**Child Maltreatment:** Maltreatment occurs when a child age birth through age 17 is physically, emotionally, or sexually harmed.

## Abuse:

- ❖ **Physical:** Information indicates the existence of an injury that is unexplained; not consistent with the explanation given; or is non-accidental. The information may also only indicate a substantial risk of bodily injury.
- ❖ **Emotional:** Information indicates psychopathological or disturbed behavior in a child which is documented by a psychiatrist, psychologist or licensed mental health practitioner to be the result of continual scapegoating, rejection or exposure to violence by the child's parent/caretaker.
- ❖ **Sexual:** Information indicates any sexually oriented act, practice, contact, or interaction in which the child is or has been used for the sexual stimulation of a parent, the child, or other person.

## Neglect:

- ❖ **Emotional neglect:** Information which indicates that the child is suffering or has suffered severe negative effects due to a parent's failure to provide the opportunities for normal experience which produce feelings of being loved, wanted, secure and worthy. Lack of such opportunities may impair the child's ability to form healthy relationships with others.
- ❖ **Physical neglect:** The failure of the parent to provide for the basic needs, or provide a safe and sanitary living environment for the child.
- ❖ **Medical Neglect of Handicapped Infant:** The withholding of medically indicated treatment (appropriate nutrition, hydration, and medication) from disabled infants with life-threatening conditions. Exceptions include those situations in which the infant is chronically and irreversibly comatose; the provision of this treatment would merely prolong dying or not be effective in ameliorating or correcting all of the infant's life-threatening conditions, and the provision of the treatment itself under these conditions would be inhumane.

**Child Welfare:** A broad spectrum of services that starts with assessment of safety and risk to the child and provides needed intervention when indicated. It includes services that help to preserve families and enhance family strengths and functioning by actively engaging families in decision making, assessing needs, and linking with resources. It also includes services that children require when out-of-the-home foster care, and different levels of group and therapeutic living arrangements. Finally, when children aren't able to return safely home, children are assisted to permanent living arrangements through services such as adoption, guardianship or other long-term arrangements.

**Family Assessment:** An in-depth assessment of family issues where their contributing factors are identified. This assessment lays the foundation for a family-centered, child-focused approach to case planning and service delivery.



**Findings:** There are five categories of findings: Court substantiated, Petition to be filed, Inconclusive, Unable to locate, and Unfounded.

- ❖ **Court Substantiated:** A District Court, County Court, or Separate Juvenile Court has entered a judgment of guilty on a criminal complaint, indictment, or information, or an adjudication of jurisdiction on a juvenile petition under Section 43-247 (3)(a), and the judgment or adjudication relates or pertains to the same matter as the report of abuse or neglect.
- ❖ **Petition to be Filed:** A criminal complaint, indictment, or information or a juvenile petition under Section 43-247(3)(a), that has been filed in District Court, County Court, or Separate Juvenile Court, and that the allegations of the complaint, indictment, information, or juvenile petition relate or pertain to the same subject matter as the report of abuse or neglect.
- ❖ **Inconclusive:** The evidence indicates it is more likely than not (preponderance of evidence standard) that the child abuse or neglect occurred, and a court adjudication did not occur.
- ❖ **Unable to Locate:** Subjects of the maltreatment report have not been located after a good-faith effort on the part of the Department.
- ❖ **Unfounded:** All reports not classified as “court substantiated,” “petition to be filed,” “inconclusive” or “unable to locate” will be classified as “Unfounded.”

**Intake:** The process of documenting all Child Welfare related contacts with HHS.

Intake includes the activities associated with the receipt of a referral, the assessment of screening, the decision to accept, and the referral of individuals or families to services.

**Initial Assessment:** The gathering and analyzing of information in response to reports of suspected child abuse or neglect, to determine which families need further intervention. During this phase the Protection and Safety Worker is primarily concerned with child safety. The worker determines if child maltreatment did occur, determines the level of risk, and arranges services as necessary to protect the child.

**Perpetrator:** The person who was found to have committed an offense, as in abuse or neglect of a child.

**State Ward:** When a court of competent jurisdiction gives custody of a child under the age of 18 to the state, that child becomes a state ward. This is done to provide for safety and/or to facilitate the provision of services. The State acts as the child’s parent.

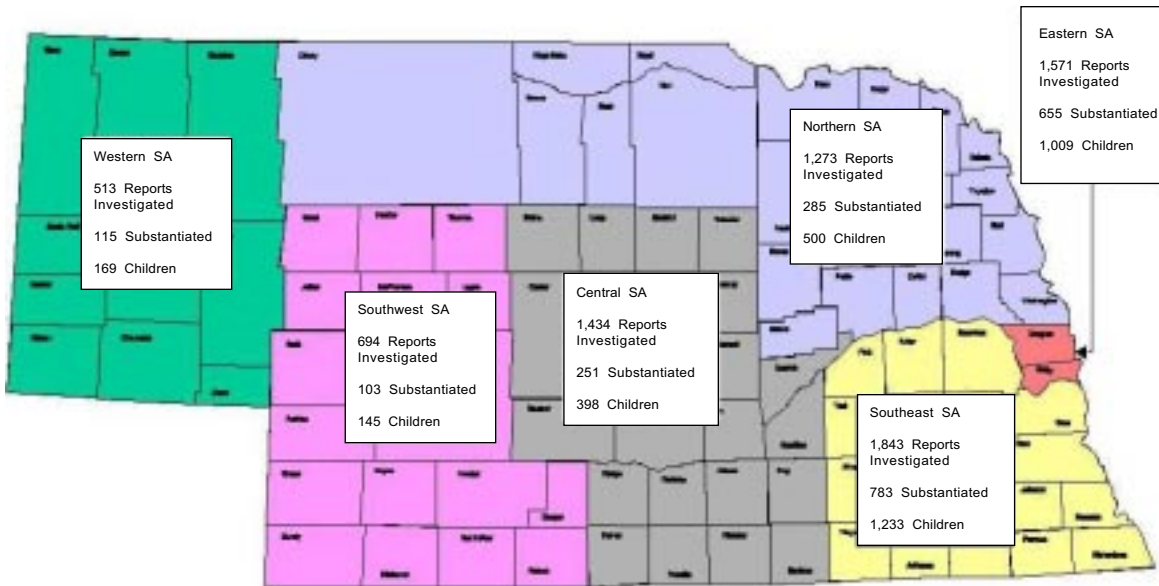


**NEBRASKA DEPARTMENT OF HEALTH AND HUMAN SERVICES  
CHILD ABUSE OR NEGLECT INVESTIGATIONS STATISTICS  
STATEWIDE SUMMARY OF INVESTIGATED REPORTS – CY 2002**

The number of child abuse and neglect investigations completed by HHS in calendar year 2002 was 7,328 (a 2.4% percent increase since 2001). Below is information about the investigations by Service Area.

2001 Service Area	2002 Service Area	Total Abuse/Neglect Reports Investigated	Number of Substantiated Abuse/Neglect Reports	Total Children Involved In Substantiated Reports
Western	Western	513	115	169
Southwest	Western	694	103	145
Northern	Central	1,273	285	500
Central	Central	1,434	251	398
Southeast	Eastern	1,843	783	1,233
Eastern	Eastern	1,571	655	1,009
<b>Total</b>		<b>7,328</b>	<b>2,192</b>	<b>3,454</b>

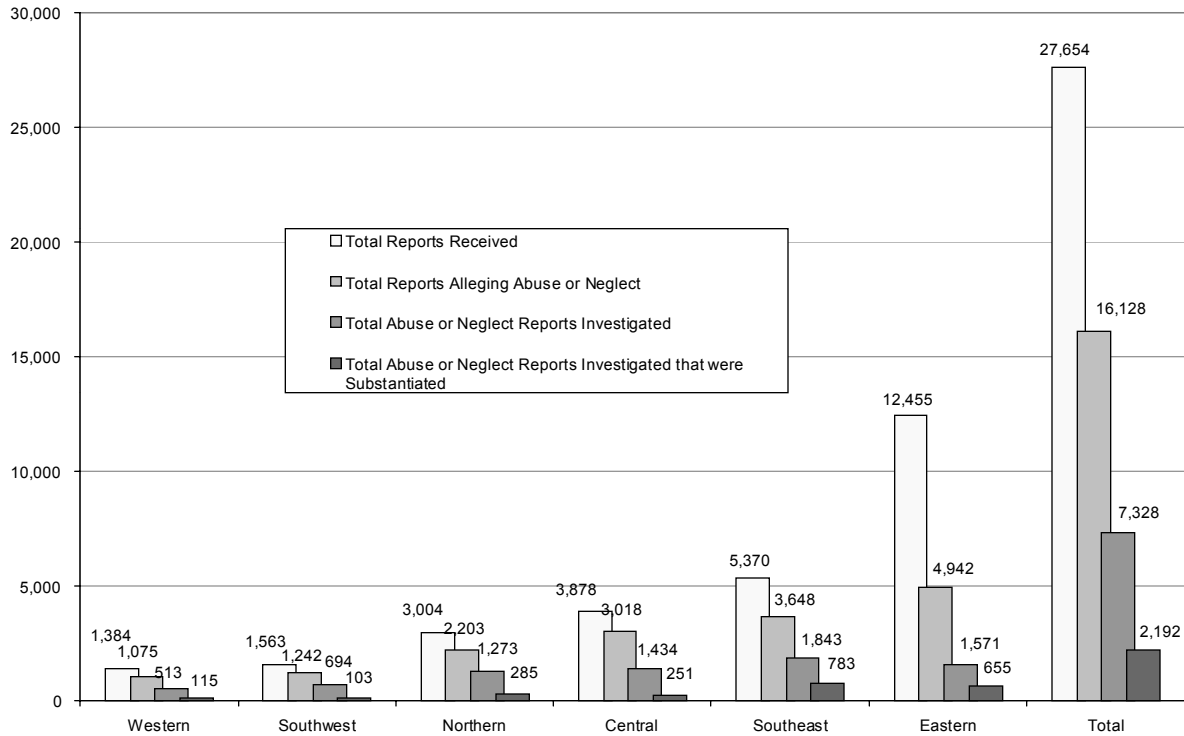
**STATEWIDE SUMMARY**



**Nebraska Health & Human Services  
Child Abuse or Neglect Reports By Service Area - CY2002**

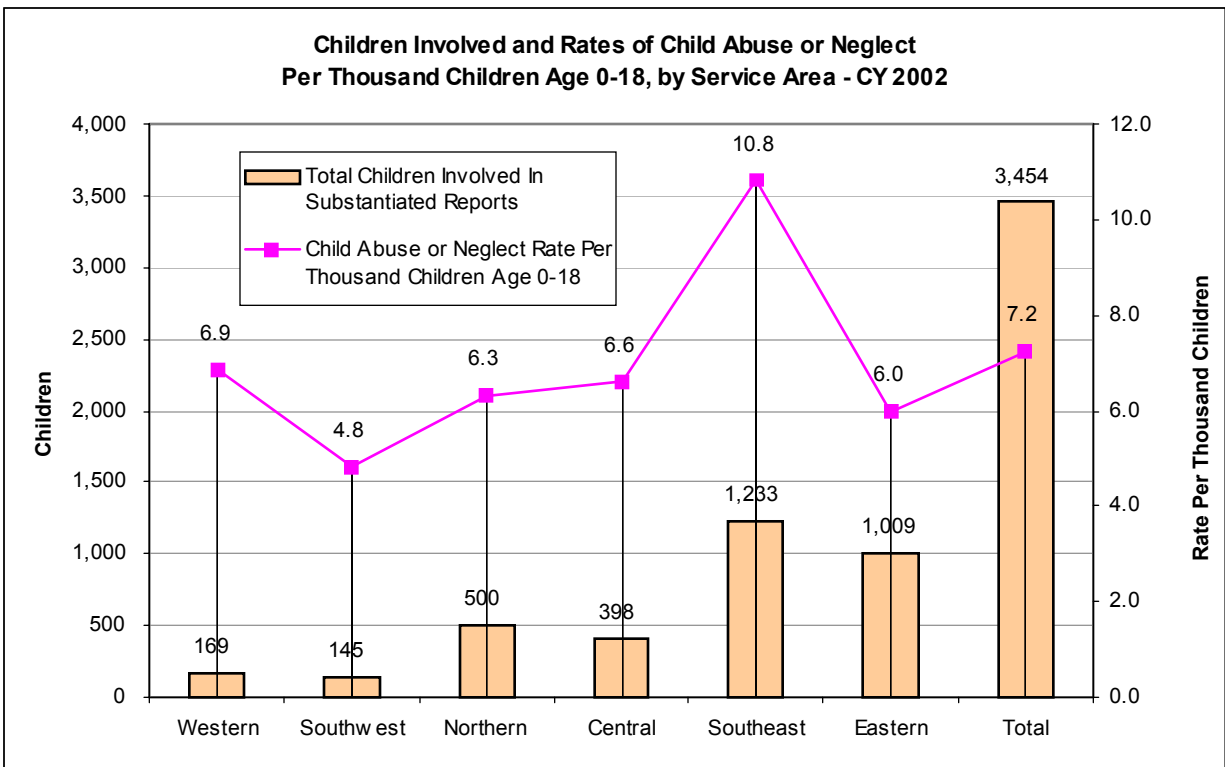
2001 Service Area	2002 Service Area	Total Reports Received	Total Reports Alleging Abuse or Neglect	Percentage of Total Reports Alleging Abuse or Neglect	Total Abuse or Neglect Reports Investigated	Percentage of Abuse or Neglect Reports Investigated	Total Abuse or Neglect Reports Investigated that were Substantiated	Percentage of Abuse or Neglect Reports Investigated that were Substantiated
Western	Western	1,384	1,075	77.7%	513	47.7%	115	22.4%
Southwest	Western	1,563	1,242	79.5%	694	55.9%	103	14.8%
Northern	Central	3,004	2,203	73.3%	1,273	57.8%	285	22.4%
Central	Central	3,878	3,018	77.8%	1,434	47.5%	251	17.5%
Southeast	Eastern	5,370	3,648	67.9%	1,843	50.5%	783	42.5%
Eastern	Eastern	12,455	4,942	39.7%	1,571	31.8%	655	41.7%
<b>Total</b>		<b>27,654</b>	<b>16,128</b>	<b>58.3%</b>	<b>7,328</b>	<b>45.4%</b>	<b>2,192</b>	<b>29.9%</b>

**Total Reports Received, Total Reports Alleging Child Abuse or Neglect,  
Child Abuse or Neglect Reports Investigated and Substantiated  
By Service Area - CY2002**



**CHILDREN INVOLVED AND RATES OF CHILD ABUSE OR NEGLECT  
SUBSTANTIATED PER THOUSAND  
BY SERVICE AREA – CY 2002**

2001 Service Area	2002 Service Area	Total Children Involved In Substantiated Reports	Nebraska Population Estimates, 2000 Ages 0-18	Child Abuse or Neglect Rate Per Thousand Children Age 0-18
Western	Western	169	24,660	6.9 > 5.7
Southwest	Western	145	30,068	4.8 > 5.7
Northern	Central	500	79,076	6.3 > 6.4
Central	Central	398	60,155	6.6 > 6.4
Southeast	Eastern	1,233	114,061	10.8 > 7.9
Eastern	Eastern	1,009	168,941	6.0 > 7.9
<b>Total</b>		<b>3,454</b>	<b>476,961</b>	<b>7.2</b>



### Source of Abuse or Neglect Reports – Statewide

Under Nebraska law, citizens are required to report suspected child abuse or neglect to their local law enforcement agencies or the Department of Health and Human Services. The following table shows the source of referrals received by HHS and the number and percentage of these referrals that were investigated.

Source of Reports CY 2002	Total Reports Alleging Abuse or Neglect		Total Abuse or Neglect Reports Investigated		Percentage of Reports that were Investigated
	Total	Percent	Total	Percent	
<b>Alleged Perpetrator</b>	23	0.1%	10	0.1%	43.5%
<b>Alleged Victim</b>	119	0.7%	57	0.8%	47.9%
<b>Parent/Legal Guardian</b>	1,500	9.3%	497	6.8%	33.1%
<b>Relative</b>	1,449	9.0%	577	7.9%	39.8%
<b>Friend/Neighbor</b>	1,381	8.6%	515	7.0%	37.3%
<b>Educational Personnel</b>	1,892	11.7%	925	12.6%	48.9%
<b>Foster Parent</b>	52	0.3%	23	0.3%	44.2%
<b>Child Care Personnel</b>	131	0.8%	64	0.9%	48.9%
<b>Day Care Center Personnel</b>	142	0.9%	74	1.0%	52.1%
<b>Law Enforcement Personnel</b>	2,305	14.3%	1,580	21.6%	68.5%
<b>Private Doctor/Nurse</b>	219	1.4%	114	1.6%	52.1%
<b>Hosp/Clinic/Public Health Personnel</b>	898	5.6%	405	5.5%	45.1%
<b>Private Social Services Personnel</b>	305	1.9%	110	1.5%	36.1%
<b>Public Social Services Personnel</b>	685	4.2%	315	4.3%	46.0%
<b>Private Mental Health Personnel</b>	567	3.5%	225	3.1%	39.7%
<b>Public Mental Health Personnel</b>	127	0.8%	58	0.8%	45.7%
<b>Private Residential Facility Personnel</b>	68	0.4%	28	0.4%	41.2%
<b>Public Residential Facility Personnel</b>	39	0.2%	18	0.2%	46.2%
<b>Court/Judge</b>	70	0.4%	60	0.8%	85.7%
<b>Prosecutor</b>	30	0.2%	22	0.3%	73.3%
<b>Private Attorney</b>	23	0.1%	14	0.2%	60.9%
<b>Public Defender</b>	5	0.0%	1	0.0%	20.0%
<b>Unknown</b>	360	2.2%	128	1.7%	35.6%
<b>Other</b>	547	3.4%	229	3.1%	41.9%
<b>Anonymous</b>	3,191	19.8%	1,279	17.5%	40.1%
<b>Total</b>	16,128	100.0%	7,328	100.0%	45.4%



### Types of Abuse or Neglect in Substantiated Cases – Statewide – CY 2002

In a single case, a child (or children) could have been involved with one or more substantiated types of abuse or neglect so the number of substantiated allegations is larger than the total number of involved children in these instances. If a child was involved in more than one case with substantiated instances of abuse or neglect in both cases, then that child would be counted in each case.

- In the State, in 2002 there were 5,527 substantiated instances of abuse or neglect involving 3,454 children or 1.6 substantiated allegations per child.
- Statewide, physical and emotional neglect together with neglect of medically handicapped infants was the most frequently substantiated form of child abuse or neglect and accounted for 3,758 (67.9%) of all substantiated allegations in 2002.
- Physical and emotional abuse was the second most frequent substantiated form of child abuse or neglect and accounted for 1,357 (24.6%) of all substantiated allegations in 2002.
- Sexual abuse, the third major category of child abuse or neglect, had 412 (7.5%) substantiated allegations in 2002.

### Types of Substantiated Abuse or Neglect Statewide - Calendar Years 1993-2002

Calendar Year	Physical Abuse	Emotional Abuse	Physical Neglect	Emotional Neglect	Med Neg Hndcp Infant	Sexual Abuse	Children Involved in Substantiated Reports of Abuse
1993	1,794		3,552			777	5,726
1994	1,362		2,871			520	4,514
1995	1,228		2,490			406	3,510
1996	1,170		2,526			441	3,612
1997	1,328		3,023			406	4,054
1998	#N/A	#N/A	#N/A	#N/A	#N/A	#N/A	4,219
1999	888	249	2,671	432	12	385	3,474
2000	827	164	2,539	344	2	313	3,074
2001	934	271	2,690	226	5	366	3,268
2002	917	440	3,500	250	8	412	3,454

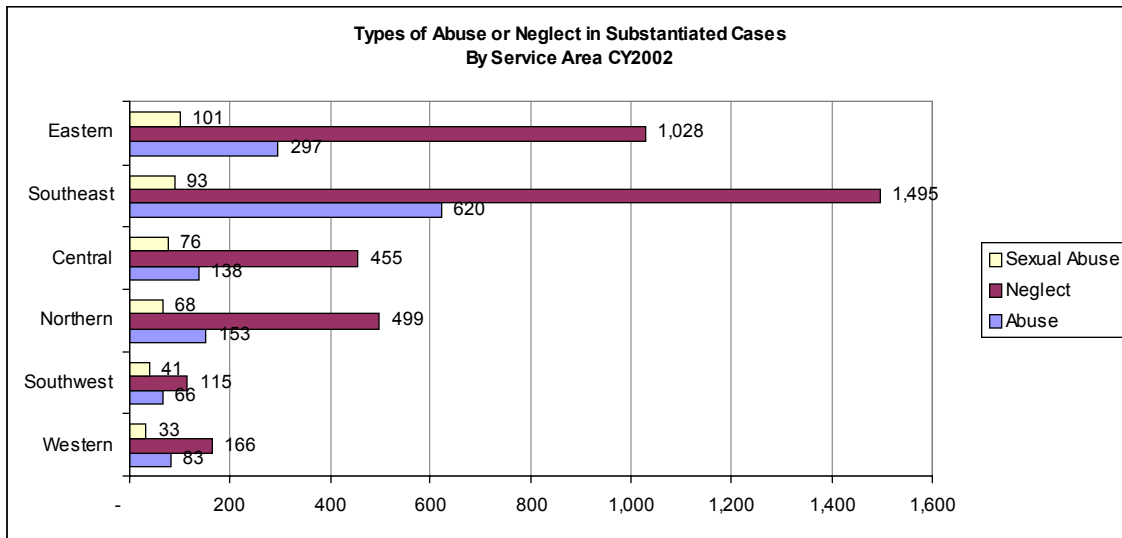
### Children Involved in Substantiated Reports of Abuse & Neglect By Sex and Type of Abuse or Neglect Allegation - CY 2002

Statewide Type of Allegation	Sex			Total
	F	M	U	
Physical Abuse	295	284	1	580
Emotional Abuse	140	114	3	257
Sexual Abuse	210	51	0	261
Emotional Neglect	81	64	1	146
Physical Neglect	1,075	1,124	6	2,205
Med Neg Hndcp Infant	-	5	0	5
<b>Total</b>	<b>1,801</b>	<b>1,642</b>	<b>11</b>	<b>3,454</b>



**Types of Abuse or Neglect in Substantiated Cases  
By Service Area - CY 2002**

2001 Service Area	2002 Service Area	Abuse	Neglect	Sexual Abuse	Children Involved in Substantiated Reports of Abuse & Neglect	Percentage of Children
Western	Western	83	166	33	169	4.9%
Southwest	Western	66	115	41	145	4.2%
Northern	Central	153	499	68	500	14.5%
Central	Central	138	455	76	398	11.5%
Southeast	Eastern	620	1,495	93	1,233	35.7%
Eastern	Eastern	297	1,028	101	1,009	29.2%
<b>Total</b>		<b>1,357</b>	<b>3,758</b>	<b>412</b>	<b>3,454</b>	<b>100.0%</b>
<b>Percent</b>		<b>24.6%</b>	<b>67.9%</b>	<b>7.5%</b>	<b>100.0%</b>	

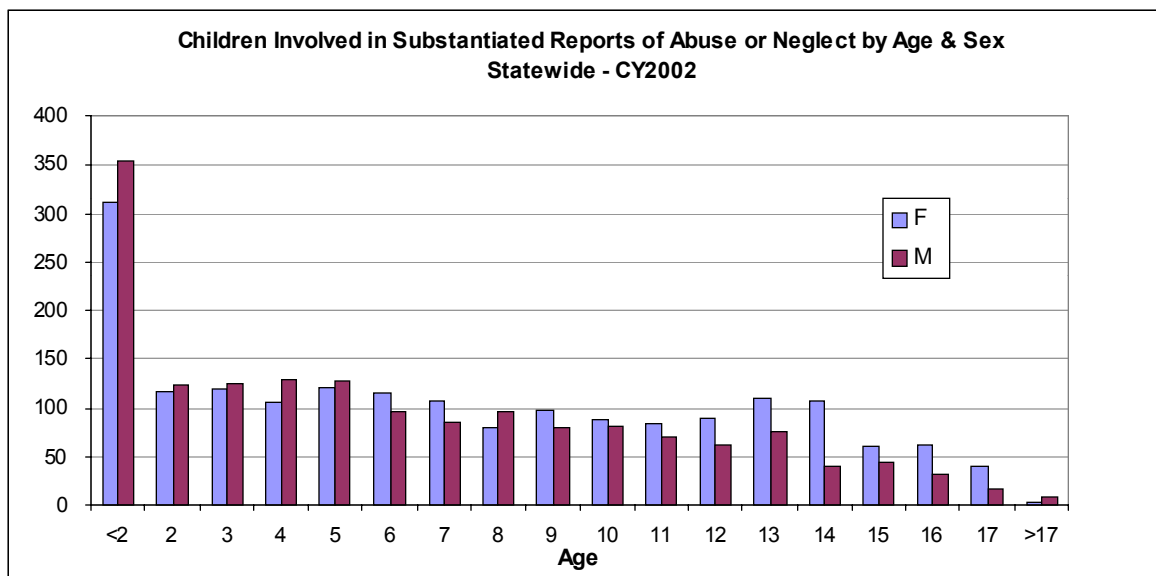


### Characteristics of the Children Involved in Abuse or Neglect - Statewide Sex and Age of Involved Children

Of the 7,328 investigations of child abuse or neglect in the State in 2002, 2,192 cases were substantiated. The substantiated investigations involved 3,454 children. Of those, 1,801 were female, 1,642 were male, and 11 were unrecorded.

The average age of the involved children was 7.1 years.  
The median age of the involved children was 6.4 years.

State	Children Involved in Substantiated Reports by Sex and Age				
Age at Report Date	F	M	U	Total	Percent
<b>Unrecorded</b>	0	0	0	0	0%
<b>&lt;2</b>	310	355	4	669	19.4%
<b>2</b>	116	123	1	240	6.9%
<b>3</b>	118	125	0	243	7.1%
<b>4</b>	104	128	0	232	6.7%
<b>5</b>	120	126	0	246	7.1%
<b>6</b>	114	96	1	211	6.1%
<b>7</b>	106	86	0	192	5.6%
<b>8</b>	80	95	1	176	5.1%
<b>9</b>	98	80	0	178	5.2%
<b>10</b>	87	82	1	170	4.9%
<b>11</b>	83	70	1	154	4.5%
<b>12</b>	89	62	1	152	4.4%
<b>13</b>	108	75	0	183	5.3%
<b>14</b>	106	40	0	146	4.2%
<b>15</b>	60	44	1	105	3.0%
<b>16</b>	61	31	0	92	2.7%
<b>17</b>	39	16	0	55	1.6%
<b>&gt;17</b>	2	8	0	10	0.3%
<b>Total</b>	1,801	1,642	11	3,454	100.0%
<b>Percent</b>	52.1%	47.5%	0.3%	100.0%	

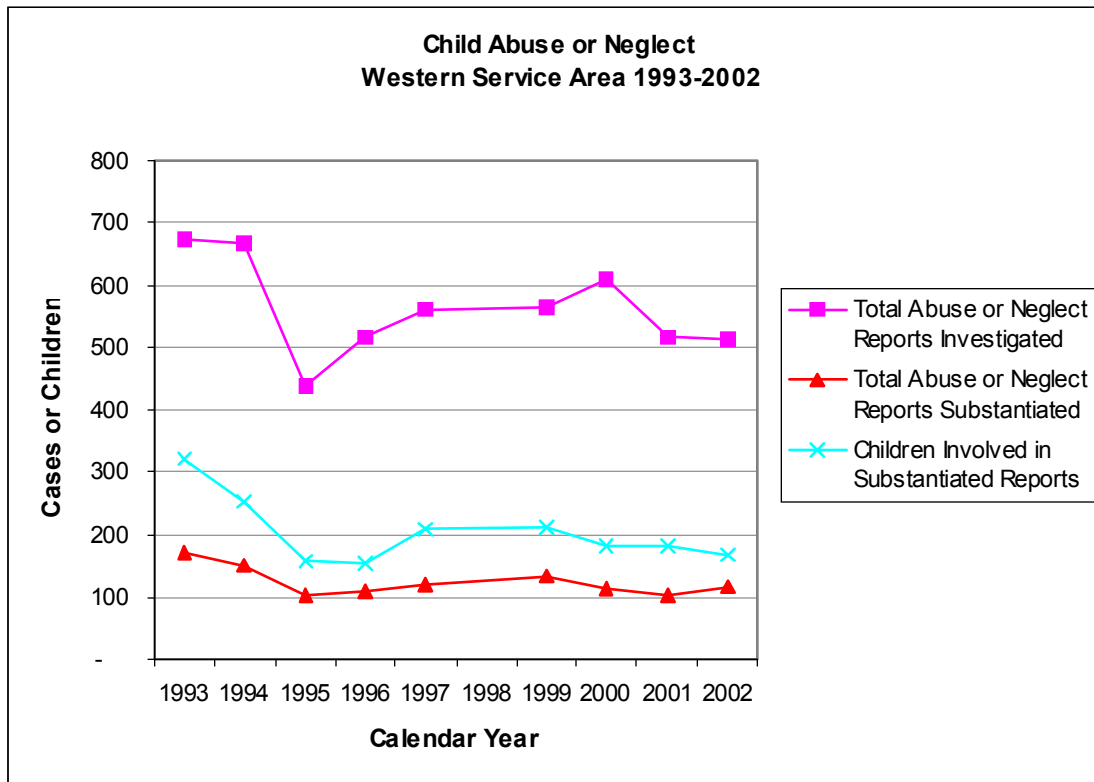


**WESTERN SERVICE AREA  
NEBRASKA DEPARTMENT OF HEALTH AND HUMAN SERVICES  
CHILD ABUSE OR NEGLECT INVESTIGATIONS STATISTICS**

**CALENDAR YEARS 1993-2002**

The number of child abuse or neglect investigations in the Western Service Area of the Nebraska Department of Health and Human Services has decreased 23.7% from calendar year 1993 to 2002. The number of cases investigated in 2002 was 513, a decrease of 8.2% since 1997.

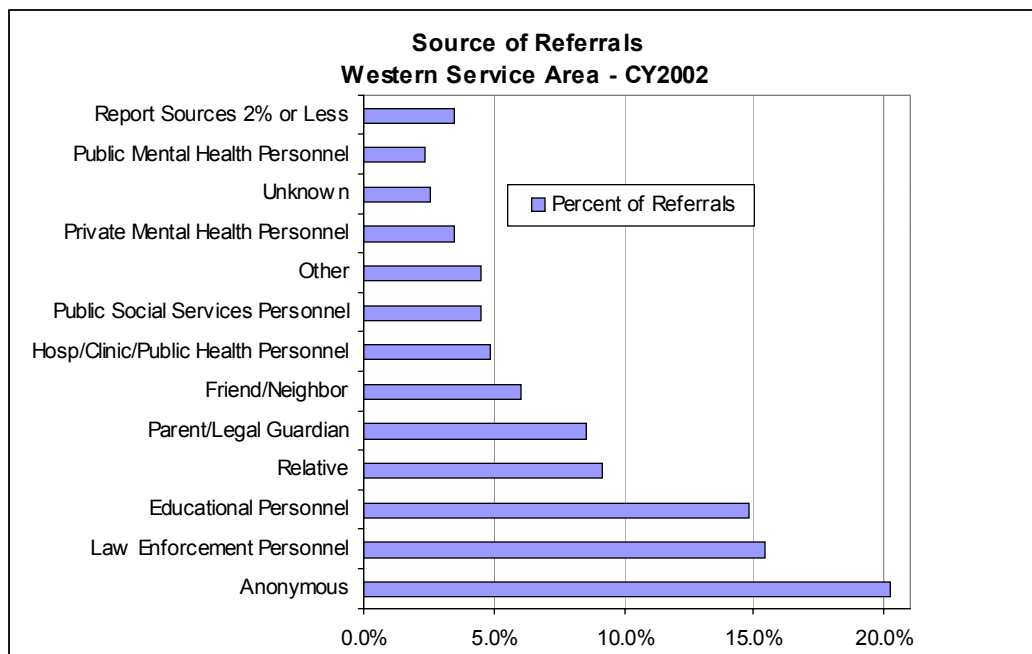
<b>Calendar Year</b>	<b>Total Abuse or Neglect Reports Investigated</b>	<b>Total Abuse or Neglect Reports Substantiated</b>	<b>Children Involved in Substantiated Reports</b>
1993	672	172	323
1994	667	149	252
1995	437	101	156
1996	516	109	154
1997	559	119	210
1998	#N/A	#N/A	#N/A
1999	565	132	213
2000	607	112	180
2001	516	101	180
2002	513	115	169



**Western Service Area  
Source of Abuse or Neglect Reports – CY 2002**

Under Nebraska law, citizens are required to report suspected child abuse or neglect to their local law enforcement agencies or to the Department. The following table shows the source of reports investigated in the Western Service Area.

Source of Reports	Total Abuse or Neglect Reports Investigated	
	Total	Percent
Alleged Perpetrator	1	0.2%
Alleged Victim	0	0.0%
Parent/Legal Guardian	44	8.6%
Relative	47	9.2%
Friend/Neighbor	31	6.0%
Educational Personnel	76	14.8%
Foster Parent	0	0.0%
Child Care Personnel	7	1.4%
Day Care Center Personnel	5	1.0%
Law Enforcement Personnel	79	15.4%
Private Doctor/Nurse	2	0.4%
Hosp/Clinic/Public Health Personnel	25	4.9%
Private Social Services Personnel	1	0.2%
Public Social Services Personnel	23	4.5%
Private Mental Health Personnel	18	3.5%
Public Mental Health Personnel	12	2.3%
Private Residential Facility Personnel	0	0.0%
Public Residential Facility Personnel	1	0.2%
Court/Judge	0	0.0%
Prosecutor	1	0.2%
Private Attorney	0	0.0%
Public Defender	0	0.0%
Unknown	13	2.5%
Other	23	4.5%
Anonymous	104	20.3%
<b>Total</b>	<b>513</b>	<b>100.0%</b>



**Western Service Area  
Types of Abuse or Neglect in Substantiated Cases – CY 2002**

In a single case, a child (or children) could have been involved with one or more substantiated types of abuse or neglect so the number of substantiated allegations is larger than the total number of involved children in these instances. If a child was involved in more than one case with substantiated instances of abuse or neglect in both cases, then that child would be counted in each case.

In the Western Service Area there were 282 substantiated instances of abuse or neglect involving 169 children or 1.7 substantiated allegations per child in 2002.

- Physical and emotional neglect together with neglect of medically handicapped infants was the most frequently substantiated form of child abuse or neglect and accounted for 166 (58.8%) of all substantiated allegations in calendar year 2002.
- Physical and emotional abuse was the second most frequent substantiated form of child abuse or neglect and accounted for 83 (29.5%) of all substantiated allegations in 2002.
- Sexual abuse, the third major category of child abuse or neglect, had 33 (11.7%) substantiated allegations in 2002.

**Types of Substantiated Abuse or Neglect  
Western Service Area - Calendar Years 1993-2002**

Calendar Year	Physical Abuse	Emotional Abuse	Physical Neglect	Emotional Neglect	Med Neg Hndcp Infant	Sexual Abuse	Children Involved in Substantiated Reports of Abuse or Neglect
1993	85		221			31	323
1994	78		144			37	252
1995	55		96			21	156
1996	52		85			31	154
1997	72		145			23	210
1998	#N/A	#N/A	#N/A	#N/A	#N/A	#N/A	#N/A
1999	61	26	148	15	-	50	213
2000	38	8	114	22	-	43	180
2001	40	9	145	20	-	32	180
2002	69	14	147	19	-	33	169

**Children Involved in Substantiated Reports of Abuse & Neglect  
By Sex and Type of Abuse or Neglect Allegation - CY2002**

Western Type of Allegation	Sex			Total
	F	M	U	
Physical Abuse	7	2	-	9
Emotional Abuse	5	6	-	11
Sexual Abuse	-	-	-	-
Emotional Neglect	20	21	-	41
Physical Neglect	42	45	1	88
Med Neg Hndcp Infant	14	6	-	20
<b>Total</b>	<b>88</b>	<b>80</b>	<b>1</b>	<b>169</b>

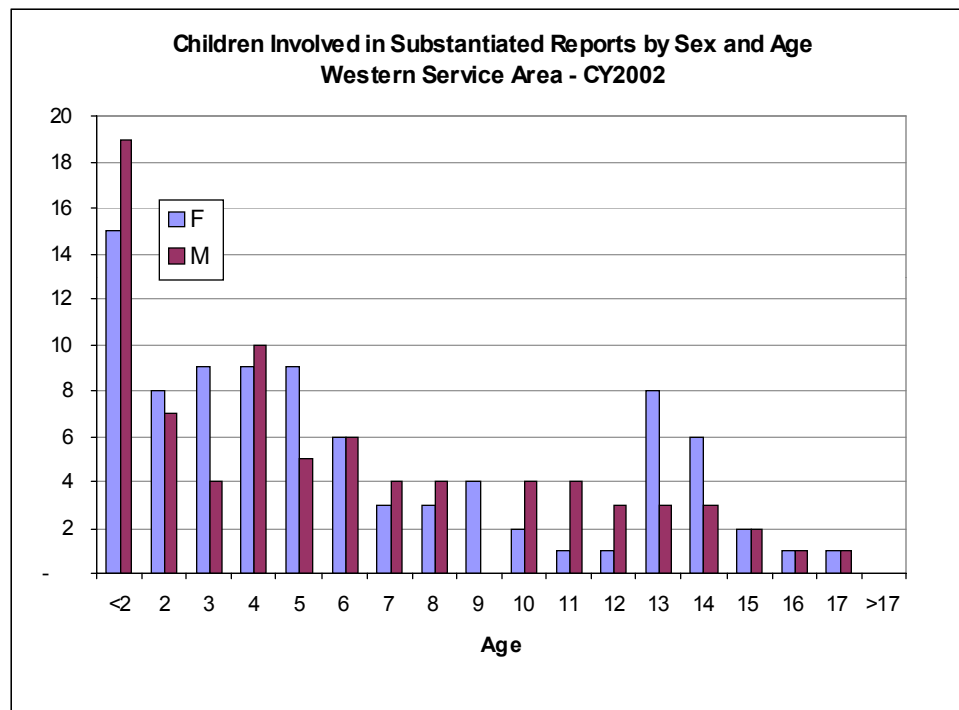


**Western Service Area – CY 2002  
Characteristics of Involved Children  
Sex and Age of Involved Children**

Of the 513 investigations of child abuse or neglect in the Western Service Area in 2002, 115 cases were substantiated. The substantiated investigations involved 169 children. Of those, 88 were female, 80 were male, and 1 was unrecorded.

The average age of the involved children was 6.1 years.  
The median age of the involved children was 5.0 years.

Western Age at Report Date	Children Involved in Substantiated Reports by Sex and Age				Total	Percent
	F	M	U			
Unrecorded	-	-	-	-	-	0.0%
<2	15	19	1	35	20.7%	
2	8	7	-	15	8.9%	
3	9	4	-	13	7.7%	
4	9	10	-	19	11.2%	
5	9	5	-	14	8.3%	
6	6	6	-	12	7.1%	
7	3	4	-	7	4.1%	
8	3	4	-	7	4.1%	
9	4	0	-	4	2.4%	
10	2	4	-	6	3.6%	
11	1	4	-	5	3.0%	
12	1	3	-	4	2.4%	
13	8	3	-	11	6.5%	
14	6	3	-	9	5.3%	
15	2	2	-	4	2.4%	
16	1	1	-	2	1.2%	
17	1	1	-	2	1.2%	
>17	0	0	-	0	0.0%	
<b>Total</b>	<b>88</b>	<b>80</b>	<b>1</b>	<b>169</b>	<b>100.0%</b>	
<b>Percent</b>	<b>52.1%</b>	<b>47.3%</b>	<b>0.6%</b>	<b>100.0%</b>		

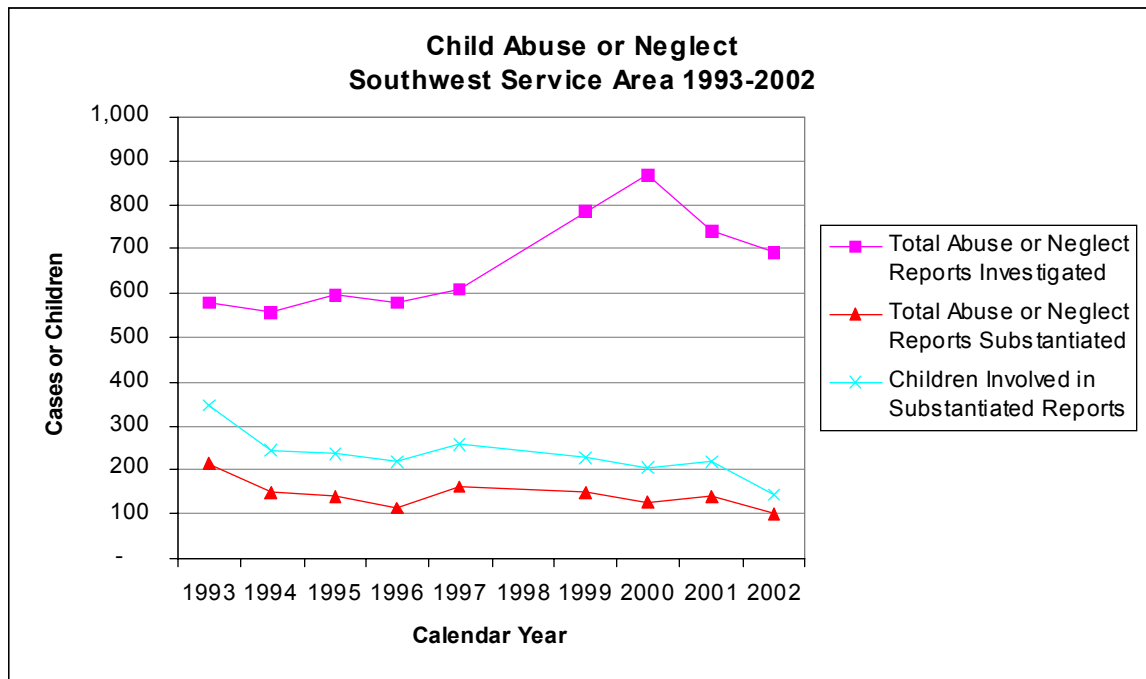


**SOUTHWEST SERVICE AREA  
NEBRASKA DEPARTMENT OF HEALTH AND HUMAN SERVICES  
CHILD ABUSE OR NEGLECT INVESTIGATIONS STATISTICS**

**CALENDAR YEARS 1993-2002**

The number of child abuse or neglect investigations in the Southwest Service Area of the Nebraska Department of Health and Human Services has increased 20.1% from calendar year 1993 to 2002. The number of cases investigated in 2002 was 694, an increase of 13.6% since 1997.

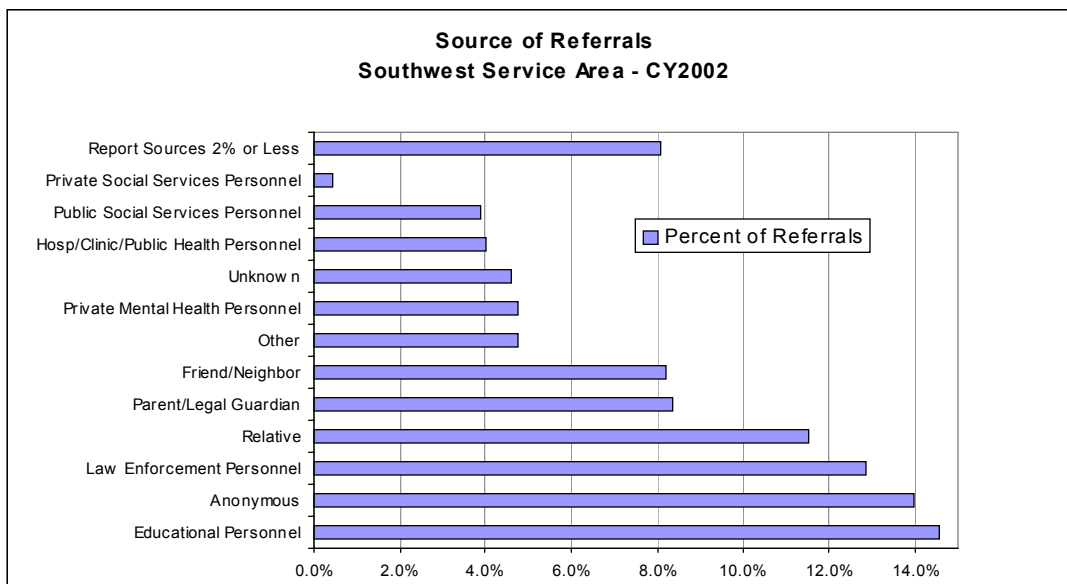
<b>Calendar Year</b>	<b>Total Abuse or Neglect Reports Investigated</b>	<b>Total Abuse or Neglect Reports Substantiated</b>	<b>Children Involved in Substantiated Reports</b>
<b>1993</b>	578	215	347
<b>1994</b>	556	150	246
<b>1995</b>	596	142	236
<b>1996</b>	581	115	221
<b>1997</b>	611	161	260
<b>1998</b>	#N/A	#N/A	#N/A
<b>1999</b>	787	151	227
<b>2000</b>	867	129	207
<b>2001</b>	742	141	220
<b>2002</b>	694	103	145



**Southwest Service Area  
Source of Referrals – CY 2002**

Under Nebraska law, citizens are required to report suspected child abuse or neglect to their local law enforcement agencies or to the Department. The following table shows the source of reports investigated in the Southwest Service Area.

Source of Reports	Total Reports Alleging Abuse or Neglect	
	Total	Percent
Alleged Perpetrator	1	0.1%
Alleged Victim	10	1.4%
Parent/Legal Guardian	58	8.4%
Relative	80	11.5%
Friend/Neighbor	57	8.2%
Educational Personnel	101	14.6%
Foster Parent	3	0.4%
Child Care Personnel	8	1.2%
Day Care Center Personnel	10	1.4%
Law Enforcement Personnel	89	12.8%
Private Doctor/Nurse	8	1.2%
Hosp/Clinic/Public Health Personnel	28	4.0%
Private Social Services Personnel	3	0.4%
Public Social Services Personnel	27	3.9%
Private Mental Health Personnel	33	4.8%
Public Mental Health Personnel	8	1.2%
Private Residential Facility Personnel	3	0.4%
Public Residential Facility Personnel	1	0.1%
Court/Judge	1	0.1%
Prosecutor	2	0.3%
Private Attorney	1	0.1%
Public Defender	0	0.0%
Unknown	32	4.6%
Other	33	4.8%
Anonymous	97	14.0%
<b>Total</b>	<b>694</b>	<b>100.0%</b>



**Southwest Service Area  
Types of Abuse or Neglect in Substantiated Cases – CY 2002**

In a single case, a child (or children) could have been involved with one or more substantiated types of abuse or neglect so the number of substantiated allegations is larger than the total number of involved children in these instances. If a child was involved in more than one case with substantiated instances of abuse or neglect in both cases, then that child would be counted in each case.

In the Southwest Service Area there were 222 substantiated instances of abuse or neglect involving 145 children or 1.5 substantiated allegations per child in 2002.

- Physical and emotional neglect together with neglect of medically handicapped infants was the most frequently substantiated form of child abuse or neglect and accounted for 115 (51.8%) of all substantiated allegations in calendar year 2002.
- Physical and emotional abuse was the second most frequent substantiated form of child abuse or neglect and accounted for 66 (29.8%) of all substantiated allegations in 2002.
- Sexual abuse, the third major category of child abuse or neglect, had 41 (18.5%) substantiated allegations in 2002.

**Types of Substantiated Abuse or Neglect  
Southwest Service Area - Calendar Years 1993-2002**

Calendar Year	Physical Abuse	Emotional Abuse	Physical Neglect	Emotional Neglect	Med Neg Hndcp Infant	Sexual Abuse	Children Involved in Substantiated Reports of Abuse or Neglect
1993	159		164			54	347
1994	93		136			39	246
1995	89		141			57	236
1996	90		156			23	221
1997	103		170			42	260
1998	#N/A	#N/A	#N/A	#N/A	#N/A	#N/A	#N/A
1999	37	8	153	2	10	41	227
2000	69	19	135	20	-	42	207
2001	65	29	144	33	-	49	220
2002	49	17	110	5	0	41	145

**Children Involved in Substantiated Reports of Abuse & Neglect  
By Sex and Type of Abuse or Neglect Allegation - CY2002**

Southwest Type of Allegation	Sex			Total
	F	M	U	
Physical Abuse	11	21	0	32
Emotional Abuse	5	7	0	12
Sexual Abuse	20	7	0	27
Emotional Neglect	2	1	0	3
Physical Neglect	30	41	0	71
Med Neg Hndcp Infant	0	0	0	0
<b>Total</b>	<b>68</b>	<b>77</b>	<b>0</b>	<b>145</b>

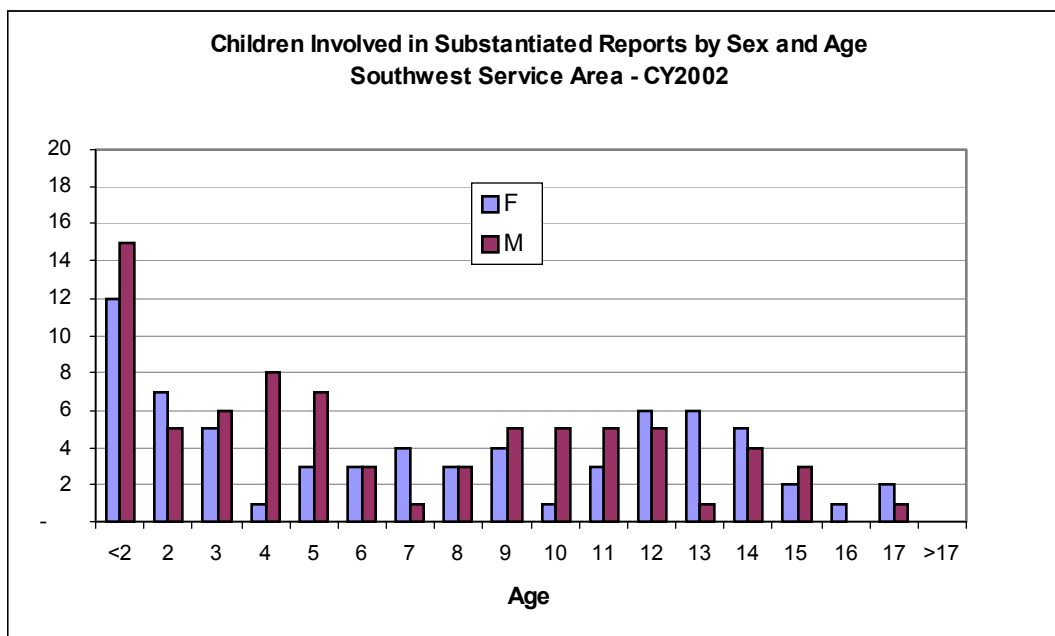


**Southwest Service Area – CY 2002  
Characteristics of Involved Children  
Sex and Age of Involved Children**

Of the 694 investigations of child abuse and neglect in the Southwest Service Area in 2002, 103 cases were substantiated. The substantiated investigations involved 145 children. Of those, 68 were female, 77 were male, and 0 were unrecorded.

The average age of the involved children was 6.7 years.  
The median age of involved children was 5.6 years.

<b>Southwest Age at Report Date</b>	<b>Children Involved in Substantiated Reports by Sex and Age</b>				<b>Total</b>	<b>Percent</b>
	<b>F</b>	<b>M</b>	<b>U</b>			
<b>Unrecorded</b>	0	0	0		0	0.0%
<b>&lt;2</b>	12	15	-		27	18.6%
<b>2</b>	7	5	-		12	8.3%
<b>3</b>	5	6	-		11	7.6%
<b>4</b>	1	8	-		9	6.2%
<b>5</b>	3	7	-		10	6.9%
<b>6</b>	3	3	-		6	4.1%
<b>7</b>	4	1	-		5	3.4%
<b>8</b>	3	3	-		6	4.1%
<b>9</b>	4	5	-		9	6.2%
<b>10</b>	1	5	-		6	4.1%
<b>11</b>	3	5	-		8	5.5%
<b>12</b>	6	5	-		11	7.6%
<b>13</b>	6	1	-		7	4.8%
<b>14</b>	5	4	-		9	6.2%
<b>15</b>	2	3	-		5	3.4%
<b>16</b>	1	0	-		1	0.7%
<b>17</b>	2	1	-		3	2.1%
<b>&gt;17</b>	0	0	-		0	0.0%
<b>Total</b>	<b>68</b>	<b>77</b>	<b>0</b>		<b>145</b>	<b>100.0%</b>
<b>Percent</b>	<b>46.9%</b>	<b>53.1%</b>	<b>0.0%</b>		<b>100.0%</b>	

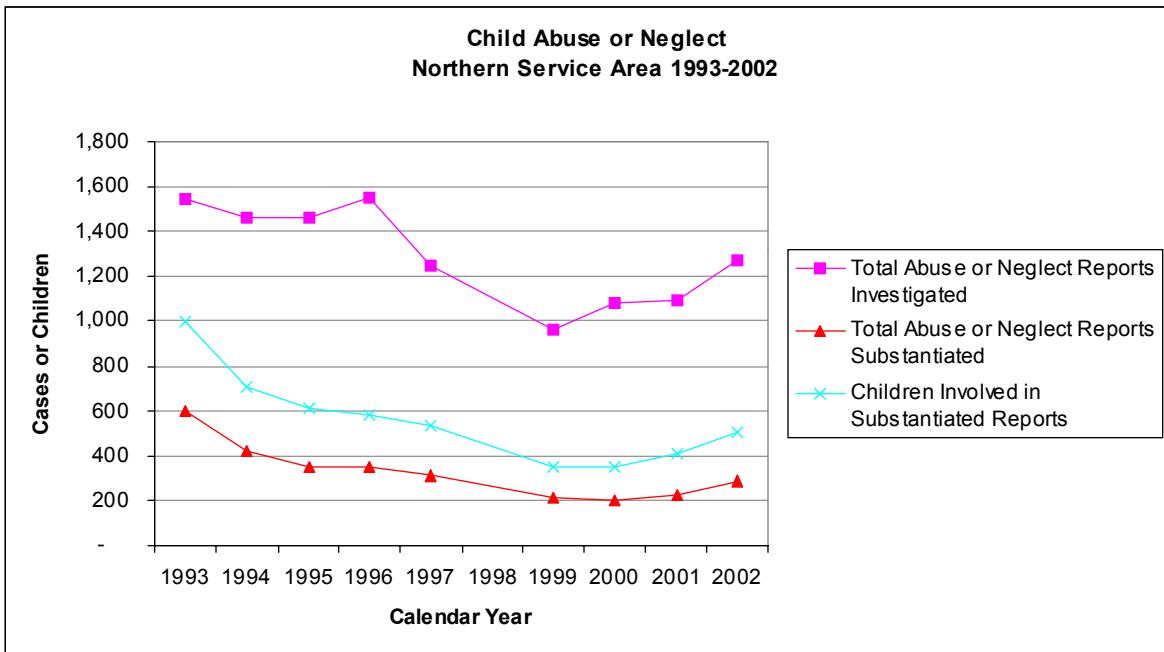


**NORTHERN SERVICE AREA  
NEBRASKA DEPARTMENT OF HEALTH AND HUMAN SERVICES  
CHILD ABUSE OR NEGLECT INVESTIGATIONS STATISTICS**

**CALENDAR YEARS 1993-2002**

The number of child abuse or neglect investigations in the Northern Service Area of the Nebraska Department of Health and Human Services has decreased 17.7% from calendar year 1993 to 2002. The number of cases investigated in 2002 was 1,273, an increase of 1.9% since 1997.

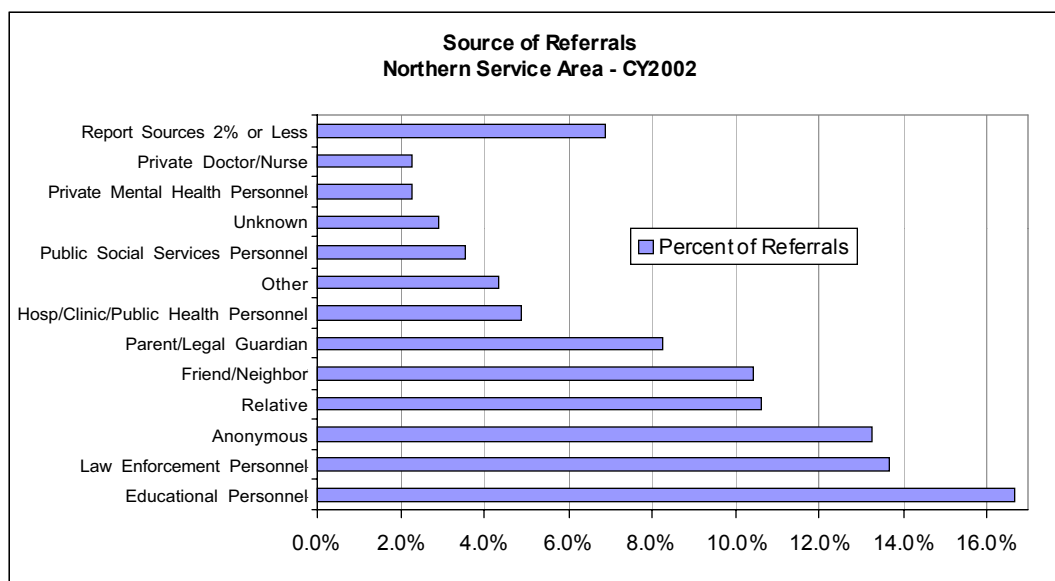
<b>Calendar Year</b>	<b>Total Abuse or Neglect Reports Investigated</b>	<b>Total Abuse or Neglect Reports Substantiated</b>	<b>Children Involved in Substantiated Reports</b>
<b>1993</b>	1,547	594	992
<b>1994</b>	1,464	426	705
<b>1995</b>	1,467	352	613
<b>1996</b>	1,552	349	583
<b>1997</b>	1,249	307	531
<b>1998</b>	#N/A	#N/A	#N/A
<b>1999</b>	962	218	351
<b>2000</b>	1,082	199	351
<b>2001</b>	1,092	226	407
<b>2002</b>	1,273	285	500



**Northern Service Area  
Source of Abuse or Neglect Reports – CY 2002**

Under Nebraska law, citizens are required to report suspected child abuse or neglect to their local law enforcement agencies or to the Department. The following table shows the source of reports investigated in the Northern Service Area.

Source of Reports	Total Reports Alleging Abuse or Neglect	
	Total	Percent
Alleged Perpetrator	0	0.0%
Alleged Victim	17	1.3%
Parent/Legal Guardian	105	8.2%
Relative	135	10.6%
Friend/Neighbor	133	10.4%
Educational Personnel	212	16.7%
Foster Parent	3	0.2%
Child Care Personnel	14	1.1%
Day Care Center Personnel	6	0.5%
Law Enforcement Personnel	174	13.7%
Private Doctor/Nurse	29	2.3%
Hosp/Clinic/Public Health Personnel	62	4.9%
Private Social Services Personnel	20	1.6%
Public Social Services Personnel	45	3.5%
Private Mental Health Personnel	29	2.3%
Public Mental Health Personnel	14	1.1%
Private Residential Facility Personnel	3	0.2%
Public Residential Facility Personnel	3	0.2%
Court/Judge	1	0.1%
Prosecutor	4	0.3%
Private Attorney	3	0.2%
Public Defender	0	0.0%
24-Unknown	37	2.9%
Other	55	4.3%
Anonymous	169	13.3%
<b>Total</b>	<b>1,273</b>	<b>100.0%</b>



**Northern Service Area  
Types of Abuse or Neglect in Substantiated Cases – CY 2002**

In a single case, a child (or children) could have been involved with one or more substantiated types of abuse or neglect so the number of substantiated allegations is larger than the total number of involved children in these instances. If a child was involved in more than one case with substantiated instances of abuse or neglect in both cases, then that child would be counted in each case.

In the Northern Service Area there were 720 substantiated instances of abuse or neglect involving 500 children or 1.4 substantiated allegations per child in 2002.

- Physical and emotional neglect together with neglect of medically handicapped infants was the most frequently substantiated form of child abuse or neglect and accounted for 499 (69.4%) of all substantiated allegations in calendar year 2002.
- Physical and emotional abuse was the second most frequent substantiated form of child abuse or neglect and accounted for 153 (21.3%) of all substantiated allegations in 2002.
- Sexual abuse, the third major category of child abuse or neglect, had 68 (9.4%) substantiated allegations in 2002.

**Types of Substantiated Abuse or Neglect  
Northern Service Area - Calendar Years 1993-2002**

Calendar Year	Physical Abuse	Emotional Abuse	Physical Neglect	Emotional Neglect	Med Neg Hndcp Infant	Sexual Abuse	Children Involved in Substantiated Reports of Abuse or Neglect
1993	370		513			149	993
1994	203		411			113	706
1995	221		407			71	613
1996	180		346			79	583
1997	164		341			78	531
1998	#N/A	#N/A	#N/A	#N/A	#N/A	#N/A	#N/A
1999	119	41	279	21	2	41	351
2000	134	30	286	27	-	22	351
2001	172	61	337	8	4	51	407
2002	110	43	485	12	2	68	500

**Children Involved in Substantiated Reports of Abuse & Neglect  
By Sex and Type of Abuse or Neglect Allegation - CY2002**

Northern Type of Allegation	Sex			Total
	F	M	U	
Physical Abuse	41	36	0	77
Emotional Abuse	13	16	0	29
Sexual Abuse	41	5	1	47
Emotional Neglect	5	4	0	9
Physical Neglect	178	157	2	337
Med Neg Hndcp Infant	0	1	0	1
<b>Total</b>	<b>278</b>	<b>219</b>	<b>3</b>	<b>500</b>



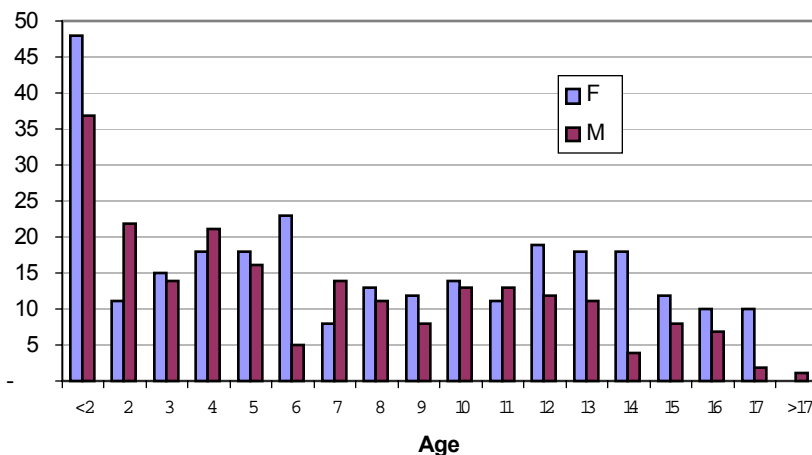
**Northern Service Area CY 2002  
Characteristics of Involved Children  
Sex and Age of Involved Children**

Of the 1,273 investigations of child abuse and neglect in the Northern Service Area in 2002, 285 cases were substantiated. The substantiated investigations involved 500 children. Of those, 278 were female, 219 were male, and 3 were unrecorded.

The average age of the involved children was 7.8 years.  
The median age of involved children was 7.3 years.

Northern Age at Report Date	Children Involved in Substantiated Reports by Sex and Age				
	F	M	U	Total	Percent
Unrecorded	0	0	0	0	0.0%
<2	48	37	1	86	17.2%
2	11	22	0	33	6.6%
3	15	14	0	29	5.8%
4	18	21	0	39	7.8%
5	18	16	0	34	6.8%
6	23	5	1	29	5.8%
7	8	14	0	22	4.4%
8	13	11	0	24	4.8%
9	12	8	0	20	4.0%
10	14	13	0	27	5.4%
11	11	13	0	24	4.8%
12	19	12	0	31	6.2%
13	18	11	0	29	5.8%
14	18	4	0	22	4.4%
15	12	8	1	21	4.2%
16	10	7	0	17	3.4%
17	10	2	0	12	2.4%
>17	0	1	0	1	0.2%
<b>Total</b>	<b>278</b>	<b>219</b>	<b>3</b>	<b>500</b>	<b>100.0%</b>
<b>Percent</b>	<b>55.6%</b>	<b>43.8%</b>	<b>0.6%</b>	<b>100.0%</b>	

**Children Involved in Substantiated Reports by Sex and Age  
Northern Service Area - CY2002**

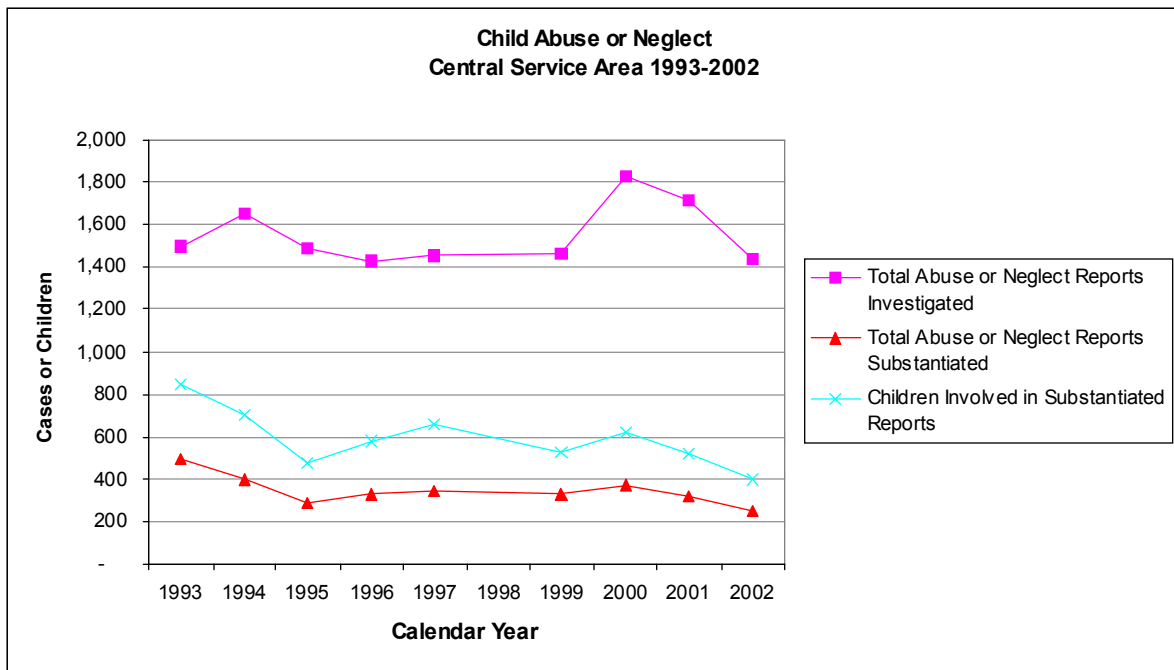


**CENTRAL SERVICE AREA  
NEBRASKA DEPARTMENT OF HEALTH AND HUMAN SERVICES  
CHILD ABUSE OR NEGLECT INVESTIGATIONS STATISTICS**

**CALENDAR YEARS 1993-2002**

The number of child abuse or neglect investigations in the Central Service Area of the Nebraska Department of Health and Human Services has decreased 4.1% from calendar 1993 to 2002. The number of cases investigated in 2002 was 1,434, a decrease of 1.6% since 1997.

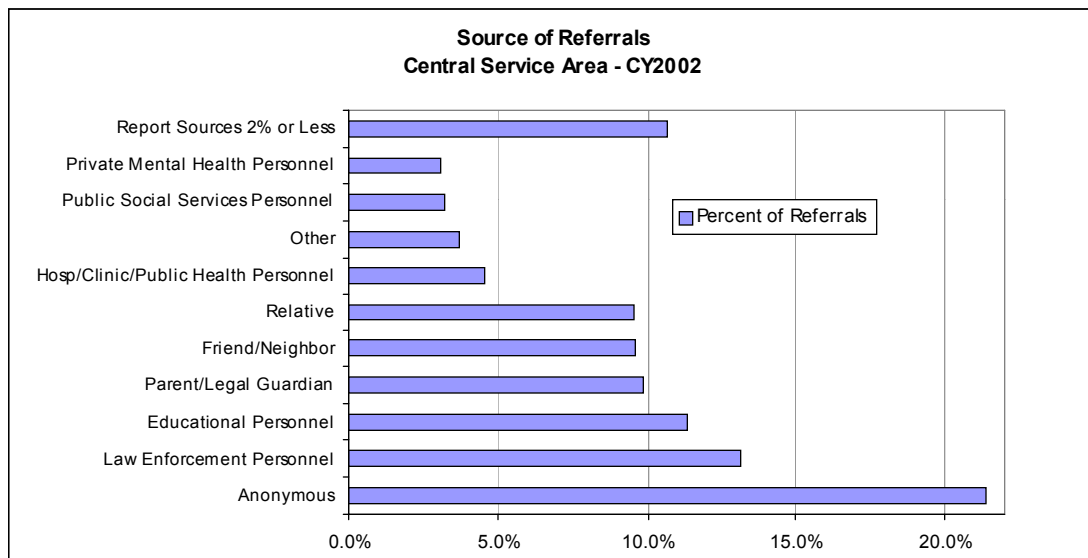
<b>Calendar Year</b>	<b>Total Abuse or Neglect Reports Investigated</b>	<b>Total Abuse or Neglect Reports Substantiated</b>	<b>Children Involved in Substantiated Reports</b>
<b>1993</b>	1,495	491	845
<b>1994</b>	1,652	397	701
<b>1995</b>	1,491	287	480
<b>1996</b>	1,426	325	577
<b>1997</b>	1,457	347	661
<b>1998</b>	#N/A	#N/A	#N/A
<b>1999</b>	1,466	328	525
<b>2000</b>	1,825	374	621
<b>2001</b>	1,710	324	523
<b>2002</b>	1,434	251	398



**Central Service Area  
Source of Abuse or Neglect Reports – CY 2002**

Under Nebraska law, citizens are required to report suspected child abuse or neglect to their local law enforcement agencies or to the Department. The following table shows the source of reports investigated in the Central Service Area.

Source of Reports	Total Abuse or Neglect Reports Investigated	
	Total	Percent
Alleged Perpetrator	1	0.1%
Alleged Victim	12	0.8%
Parent/Legal Guardian	141	9.8%
Relative	137	9.6%
Friend/Neighbor	138	9.6%
Educational Personnel	162	11.3%
Foster Parent	6	0.4%
Child Care Personnel	22	1.5%
Day Care Center Personnel	13	0.9%
Law Enforcement Personnel	189	13.2%
Private Doctor/Nurse	22	1.5%
Hosp/Clinic/Public Health Personnel	65	4.5%
Private Social Services Personnel	20	1.4%
Public Social Services Personnel	46	3.2%
Private Mental Health Personnel	44	3.1%
Public Mental Health Personnel	16	1.1%
Private Residential Facility Personnel	4	0.3%
Public Residential Facility Personnel	11	0.8%
Court/Judge	2	0.1%
Prosecutor	3	0.2%
Private Attorney	6	0.4%
Public Defender	1	0.1%
Unknown	14	1.0%
Other	53	3.7%
Anonymous	306	21.3%
<b>Total</b>	<b>1,434</b>	<b>100.0%</b>



**Central Service Area  
Types of Abuse or Neglect in Substantiated Cases – CY 2002**

In a single case, a child (or children) could have been involved with one or more substantiated types of abuse or neglect so the number of substantiated allegations is larger than the total number of involved children in these instances. If a child was involved in more than one case with substantiated instances of abuse or neglect in both cases, then that child would be counted in each case.

In the Central Service Area there were 669 substantiated instances of abuse or neglect involving 398 children or 1.7 substantiated allegations per child in 2002.

- Physical and emotional neglect together with neglect of medically handicapped infants was the most frequently substantiated form of child abuse or neglect and accounted for 455 (68%) of all substantiated allegations in calendar year 2002.
- Physical and emotional abuse was the second most frequent substantiated form of child abuse or neglect and accounted for 138 (20.6%) of all substantiated allegations in 2002.
- Sexual abuse, the third major category of child abuse or neglect, had 76 (11.47%) substantiated allegations in 2002.

**Types of Substantiated Abuse or Neglect  
Central Service Area - Calendar Years 1993-2002**

Calendar Year	Physical Abuse	Emotional Abuse	Physical Neglect	Emotional Neglect	Med Neg Hndcp Infant	Sexual Abuse	Children Involved in Substantiated Reports of Abuse or Neglect
1993	244		495			107	844
1994	215		417			78	700
1995	149		298			52	480
1996	183		363			63	577
1997	198		481			47	661
1998	#N/A	#N/A	#N/A	#N/A	#N/A	#N/A	#N/A
1999	160	77	411	38	-	63	525
2000	136	32	611	21	2	76	621
2001	126	9	525	13	1	62	523
2002	113	25	426	23	6	76	398

**Children Involved in Substantiated Reports of Abuse & Neglect  
By Sex and Type of Abuse or Neglect Allegation - CY 2002**

Central Type of Allegation	Sex			Total
	F	M	U	
Physical Abuse	34	33	0	67
Emotional Abuse	10	4	0	14
Sexual Abuse	32	13	0	45
Emotional Neglect	10	4	0	14
Physical Neglect	127	127	0	254
Med Neg Hndcp Infant	0	4	0	4
<b>Total</b>	<b>213</b>	<b>185</b>	<b>0</b>	<b>398</b>

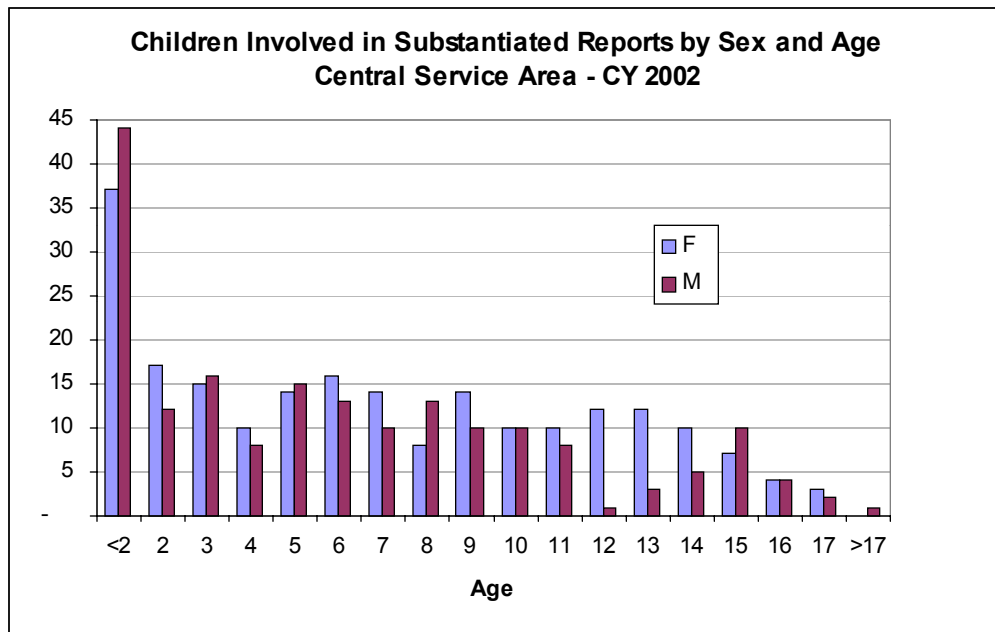


**Central Service Area CY 2002  
Characteristics of Involved Children  
Sex and Age of Involved Children**

Of the 1,434 investigations of child abuse or neglect in the Central Service Area in 2002, 251 cases were substantiated. The substantiated investigations involved 398 children. Of those, 213 were female, 185 were male, and 0 were unrecorded.

The average age of the involved children was 6.6 years.  
The median age of involved children was 6.3 years.

Central Age at Report Date	Children Involved in Substantiated Reports by Sex and Age				
	F	M	U	Total	Percent
Unrecorded	0	0	0	0	0.0%
<2	37	44	0	81	20.4%
2	17	12	0	29	7.3%
3	15	16	0	31	7.8%
4	10	8	0	18	4.5%
5	14	15	0	29	7.3%
6	16	13	0	29	7.3%
7	14	10	0	24	6.0%
8	8	13	0	21	5.3%
9	14	10	0	24	6.0%
10	10	10	0	20	5.0%
11	10	8	0	18	4.5%
12	12	1	0	13	3.3%
13	12	3	0	15	3.8%
14	10	5	0	15	3.8%
15	7	10	0	17	4.3%
16	4	4	0	8	2.0%
17	3	2	0	5	1.3%
>17	0	1	0	1	0.3%
<b>Total</b>	<b>213</b>	<b>185</b>	<b>0</b>	<b>398</b>	<b>100.0%</b>
<b>Percent</b>	<b>53.5%</b>	<b>46.4%</b>	<b>0.0%</b>	<b>100.0%</b>	

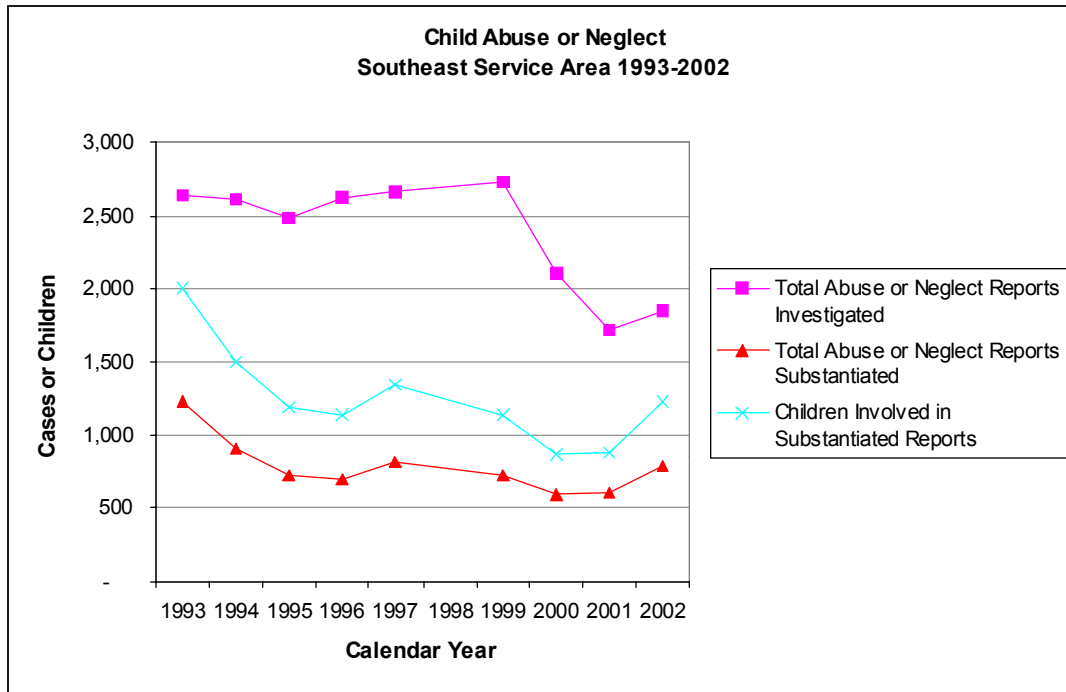


**SOUTHEAST SERVICE AREA  
NEBRASKA DEPARTMENT OF HEALTH AND HUMAN SERVICES  
CHILD ABUSE OR NEGLECT INVESTIGATIONS STATISTICS**

**CALENDAR YEARS 1993-2002**

The number of child abuse or neglect investigations in the Southeast Service Area of the Nebraska Department of Health and Human Services has decreased 30.3% from calendar year 1993 to 2002. The number of cases investigated in 2002 was 1,843, a decrease of 30.8% since 1997.

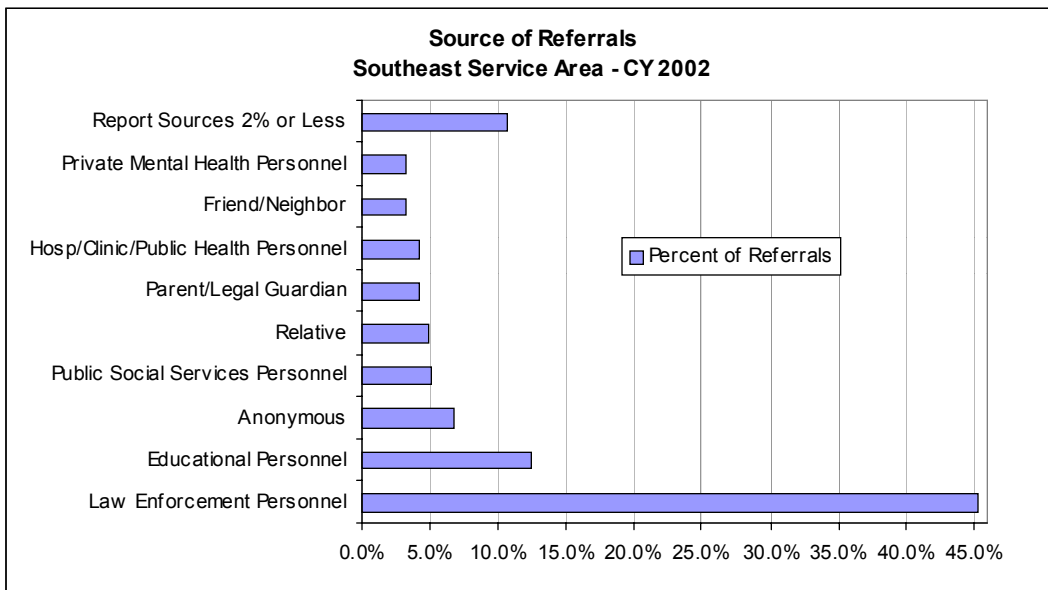
<b>Calendar Year</b>	<b>Total Abuse or Neglect Reports Investigated</b>	<b>Total Abuse or Neglect Reports Substantiated</b>	<b>Children Involved in Substantiated Reports</b>
<b>1993</b>	2,644	1,234	2,007
<b>1994</b>	2,606	906	1,505
<b>1995</b>	2,486	725	1,185
<b>1996</b>	2,629	693	1,144
<b>1997</b>	2,665	814	1,347
<b>1998</b>	#N/A	#N/A	#N/A
<b>1999</b>	2,727	719	1,132
<b>2000</b>	2,111	590	869
<b>2001</b>	1,722	611	884
<b>2002</b>	1,843	783	1,233



**Southeast Service Area  
Source of Abuse or Neglect Reports – CY 2002**

Under Nebraska law, citizens are required to report suspected child abuse or neglect to their local law enforcement agencies or to the Department. The following table shows the source of reports investigated in the Southeast Service Area.

Source of Reports	Total Abuse or Neglect Reports Investigated	
	Total	Percent
Alleged Perpetrator	3	0.2%
Alleged Victim	11	0.6%
Parent/Legal Guardian	76	4.1%
Relative	89	4.8%
Friend/Neighbor	60	3.3%
Educational Personnel	231	12.5%
Foster Parent	8	0.4%
Child Care Personnel	3	0.2%
Day Care Center Personnel	22	1.2%
Law Enforcement Personnel	835	45.3%
Private Doctor/Nurse	23	1.2%
Hosp/Clinic/Public Health Personnel	76	4.1%
Private Social Services Personnel	17	0.9%
Public Social Services Personnel	95	5.2%
Private Mental Health Personnel	60	3.3%
Public Mental Health Personnel	3	0.2%
Private Residential Facility Personnel	12	0.7%
Public Residential Facility Personnel	1	0.1%
Court/Judge	24	1.3%
Prosecutor	6	0.3%
Private Attorney	3	0.2%
Public Defender	0	0.0%
Coroner	0	0.0%
Unknown	23	1.2%
Other	37	2.0%
Anonymous	125	6.8%
<b>Total</b>	<b>1,843</b>	<b>100.0%</b>



**Southeast Service Area  
Types of Abuse or Neglect in Substantiated Cases – CY 2002**

In a single case, a child (or children) could have been involved with one or more substantiated types of abuse or neglect so the number of substantiated allegations is larger than the total number of involved children in these instances. If a child was involved in more than one case with substantiated instances of abuse or neglect in both cases, then that child would be counted in each case.

In the Southeast Service Area there were 2,208 substantiated instances of abuse or neglect involving 1,233 children or 1.8 substantiated allegations per child in 2002.

- Physical and emotional neglect together with neglect of medically handicapped infants was the most frequently substantiated form of child abuse or neglect and accounted for 1,495 (67.7%) of all substantiated allegations in calendar year 2002.
- Physical and emotional abuse was the second most frequent substantiated form of child abuse or neglect and accounted for 620 (28.1%) of all substantiated allegations in 2002.
- Sexual abuse, the third major category of child abuse or neglect, had 93 (4.2%) substantiated allegations in 2002.

**Types of Substantiated Abuse or Neglect  
Southeast Service Area - Calendar Years 1993-2002**

Calendar Year	Physical Abuse	Emotional Abuse	Physical Neglect	Emotional Neglect	Med Neg Hndcp Infant	Sexual Abuse	Children Involved in Substantiated Reports of Abuse or Neglect
1993	602		1,302			294	2,007
1994	413		1,008			160	1,505
1995	376		856			140	1,185
1996	325		837			146	1,144
1997	323		1,009			134	1,347
1998	#N/A	#N/A	#N/A	#N/A	#N/A	#N/A	#N/A
1999	231	47	839	316	-	91	1,132
2000	181	29	678	198	-	72	869
2001	226	105	634	73	-	89	884
2002	302	318	1,312	183	-	93	1,233

**Children Involved in Substantiated Reports of Abuse & Neglect  
By Sex and Type of Abuse or Neglect Allegation - CY2002**

Southeast Type of Allegation	Sex			Total
	F	M	U	
Physical Abuse	81	86	1	168
Emotional Abuse	94	81	2	177
Sexual Abuse	41	11	0	52
Emotional Neglect	55	46	1	102
Physical Neglect	330	401	3	734
Med Neg Hndcp Infant	0	0	0	0
<b>Total</b>	601	625	7	1,233



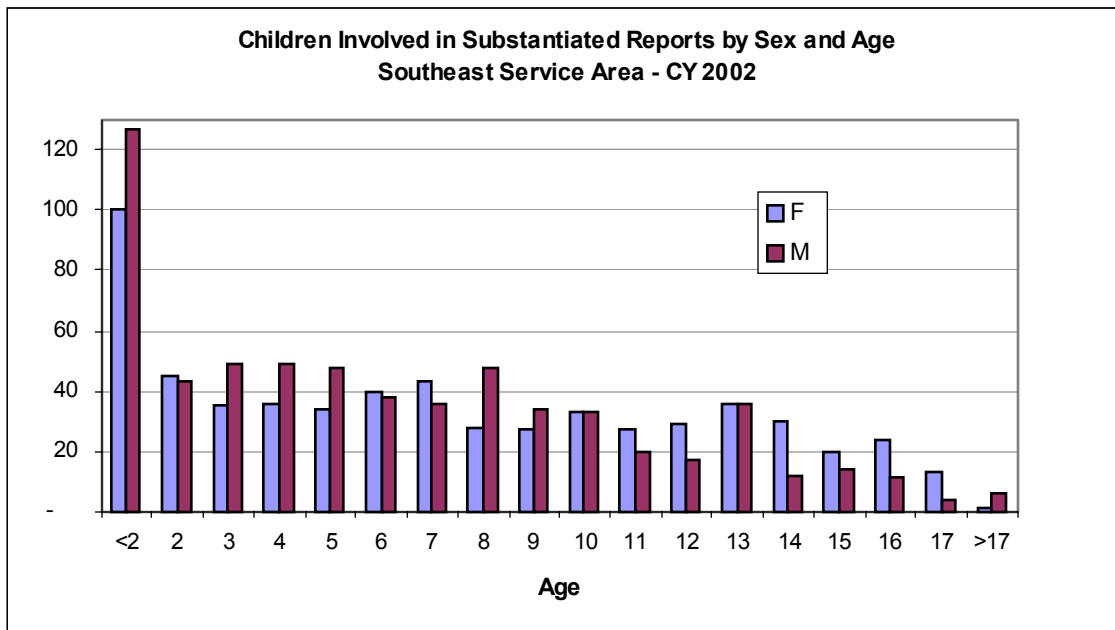
**Southeast Service Area – CY 2002  
Characteristics of Involved Children  
Sex and Age of Involved Children**

Of the 1,843 investigations of child abuse and neglect in the Southeast Service Area in 2002, 783 cases were substantiated. The substantiated investigations involved 1,233 children. Of those, 601 were female, 625 were male, and 7 were unrecorded.

The average age of the involved children was 7.2 years.

The median age of involved children was 6.7 years.

Southeast Age at Report Date	Children Involved in Substantiated Reports by Sex and Age				
	F	M	U	Total	Percent
Unrecorded	0	0	0	0	0.0%
<2	100	127	2	229	18.6%
2	45	43	1	89	7.2%
3	35	49	0	84	6.8%
4	36	49	0	85	6.9%
5	34	48	0	82	6.7%
6	40	38	0	78	6.3%
7	43	36	0	79	6.4%
8	28	48	1	77	6.2%
9	27	34	0	61	4.9%
10	33	33	1	67	5.4%
11	27	20	1	48	3.9%
12	29	17	1	47	3.8%
13	36	36	0	72	5.8%
14	30	12	0	42	3.4%
15	20	14	0	34	2.8%
16	24	11	0	35	2.8%
17	13	4	0	17	1.4%
>17	1	6	0	7	0.6%
<b>Total</b>	<b>601</b>	<b>625</b>	<b>7</b>	<b>1,233</b>	<b>100.0%</b>
<b>Percent</b>	<b>48.7%</b>	<b>50.7%</b>	<b>0.6%</b>	<b>100.0%</b>	

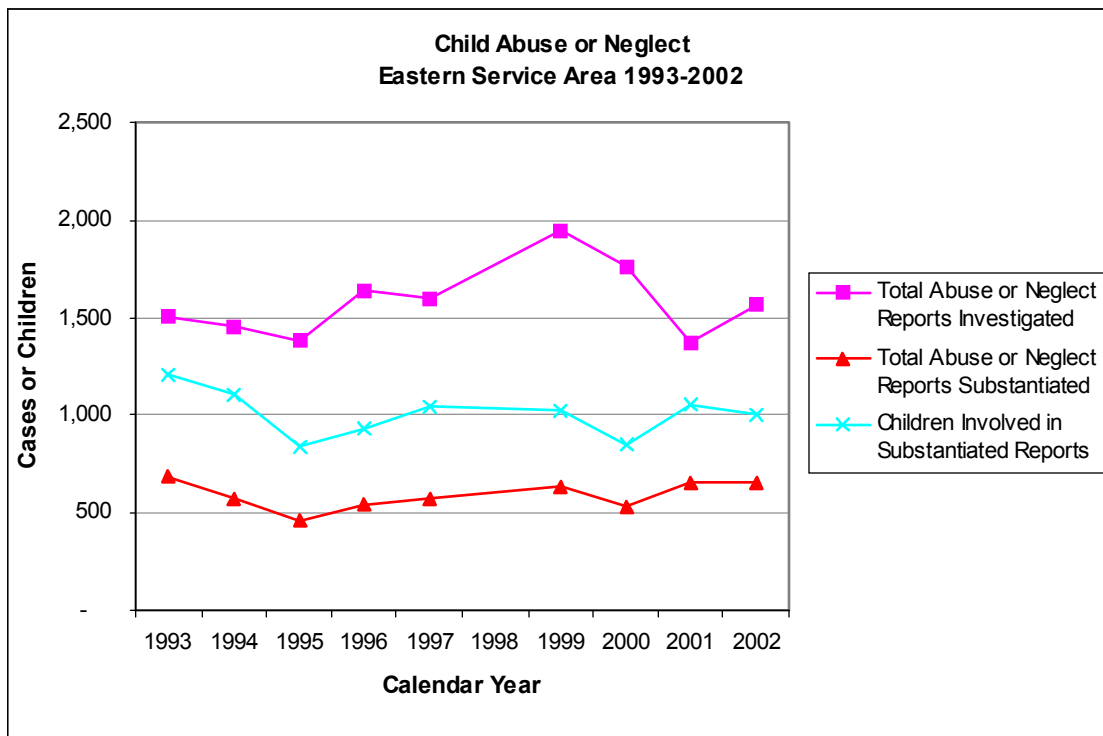


**EASTERN SERVICE AREA  
NEBRASKA DEPARTMENT OF HEALTH AND HUMAN SERVICES  
CHILD ABUSE OR NEGLECT INVESTIGATIONS STATISTICS**

**CALENDAR YEARS 1993-2002**

The number of child abuse or neglect investigations in the Eastern Service Area of the Nebraska Department of Health and Human Services has increased 4.6% from calendar year 1993 to 2002. The number of cases investigated in 2002 was 1,571, a decrease of 1.7% since 1997.

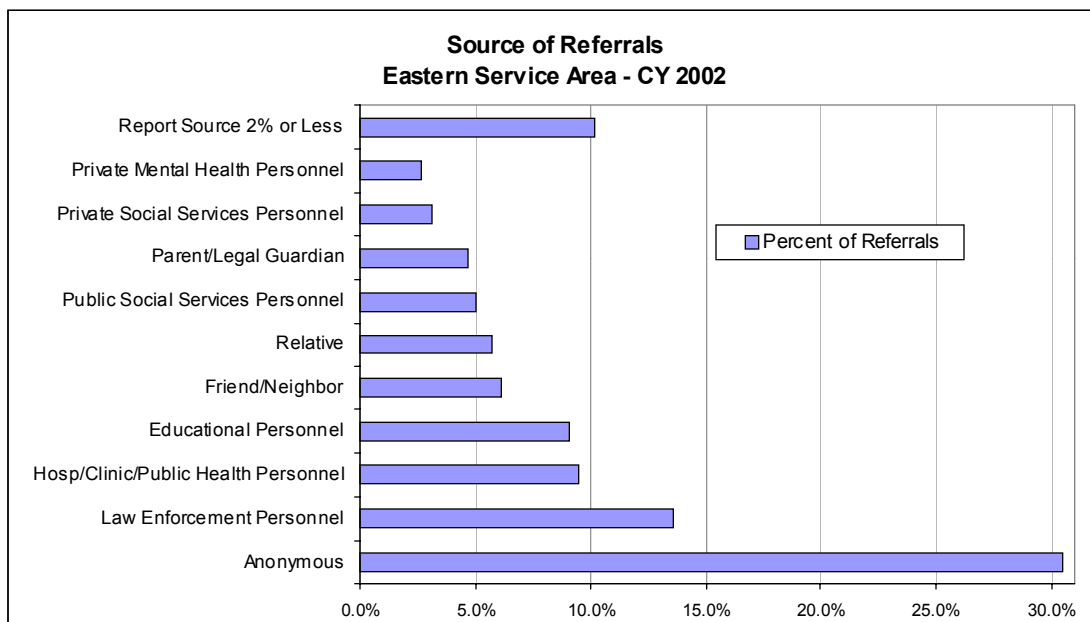
Calendar Year	Total Abuse or Neglect Reports Investigated	Total Abuse or Neglect Reports Substantiated	Children Involved in Substantiated Reports
1993	1,502	688	1,212
1994	1,459	577	1,105
1995	1,381	465	840
1996	1,642	544	933
1997	1,598	578	1,045
1998	#N/A	#N/A	#N/A
1999	1,948	635	1,027
2000	1,762	528	846
2001	1,371	657	1,054
2002	1,571	655	1,009



**Eastern Service Area  
Source of Referrals – CY 2002**

Under Nebraska law, citizens are required to report suspected child abuse or neglect to their local law enforcement agencies or to the Department. The following table shows the source of reports investigated in the Eastern Service Area.

Source of Reports	Total Reports Alleging Abuse or Neglect	
	Total	Percent
Alleged Perpetrator	4	0.3%
Alleged Victim	7	0.4%
Parent/Legal Guardian	73	4.6%
Relative	89	5.7%
Friend/Neighbor	96	6.1%
Educational Personnel	143	9.1%
Foster Parent	3	0.2%
Child Care Personnel	10	0.6%
Day Care Center Personnel	18	1.1%
Law Enforcement Personnel	214	13.6%
Private Doctor/Nurse	30	1.9%
Hosp/Clinic/Public Health Personnel	149	9.5%
Private Social Services Personnel	49	3.1%
Public Social Services Personnel	79	5.0%
Private Mental Health Personnel	41	2.6%
Public Mental Health Personnel	5	0.3%
Private Residential Facility Personnel	6	0.4%
Public Residential Facility Personnel	1	0.1%
Court/Judge	32	2.0%
Prosecutor	6	0.4%
Private Attorney	1	0.1%
Public Defender	0	0.0%
Coroner	0	0.0%
Unknown	9	0.6%
Other	28	1.8%
Anonymous	478	30.4%
<b>Total</b>	<b>1,571</b>	<b>100.0%</b>



**Eastern Service Area  
Types of Abuse or Neglect in Substantiated Cases – CY 2002**

In a single case, a child (or children) could have been involved with one or more substantiated types of abuse or neglect so the number of substantiated allegations is larger than the total number of involved children in these instances. If a child was involved in more than one case with substantiated instances of abuse or neglect in both cases, then that child would be counted in each case.

In the Eastern Service Area there were 1,426 substantiated instances of abuse or neglect involving 1,009 children or 1.4 substantiated allegations per child in 2002.

- Physical and emotional neglect together with neglect of medically handicapped infants was the most frequently substantiated form of child abuse or neglect and accounted for 1,128 (72.1%) of all substantiated allegations in calendar year 2002.
- Physical and emotional abuse was the second most frequent substantiated form of child abuse or neglect and accounted for 297 (20.8%) of all substantiated allegations in 2002.
- Sexual abuse, the third major category of child abuse or neglect, had 101 (7.1%) substantiated allegations in 2002.

**Types of Substantiated Abuse or Neglect  
Eastern Service Area - Calendar Years 1993-2002**

Calendar Year	Physical Abuse	Emotional Abuse	Physical Neglect	Emotional Neglect	Med Neg Hndcp Infant	Sexual Abuse	Children Involved in Substantiated Reports of Abuse or Neglect
1993	334		857			142	1,212
1994	360		755			93	1,105
1995	338		692			65	840
1996	340		739			99	933
1997	468		877			82	1,045
1998	#N/A	#N/A	#N/A	#N/A	#N/A	#N/A	#N/A
1999	280	51	841	39	-	99	1,027
2000	269	46	715	56	-	58	846
2001	305	58	905	79	-	83	1,054
2002	274	23	1,020	8	-	101	1,009

**Children Involved in Substantiated Reports of Abuse & Neglect  
By Sex and Type of Abuse or Neglect Allegation – CY 2002**

Eastern Type of Allegation	Sex			Total
	F	M	U	
Physical Abuse	106	89	0	195
Emotional Abuse	10	6	0	16
Sexual Abuse	64	7	0	71
Emotional Neglect	3	2	0	5
Physical Neglect	370	352	0	722
Med Neg Hndcp Infant	0	0	0	0
<b>Total</b>	<b>553</b>	<b>456</b>	<b>0</b>	<b>1,009</b>



**Eastern Service Area – CY 2002  
Characteristics of Involved Children  
Sex and Age of Involved Children**

Of the 1,571 investigations of child abuse and neglect in the Eastern Service Area in 2002, 655 cases were substantiated. The substantiated investigations involved 1,009 children. Of those, 553 were female, 456 were male, and 0 were unrecorded.

The average age of the involved children was 7.0 years.  
The median age of involved children was 6.0 years.

Eastern Age at Report Date	Children Involved in Substantiated Reports by Sex and Age				
	F	M	U	Total	Percent
Unrecorded	0	0	0	0	0.0%
<2	98	113	0	211	20.9%
2	28	34	0	62	6.1%
3	39	36	0	75	7.4%
4	30	32	0	62	6.1%
5	42	35	0	77	7.6%
6	26	31	0	57	5.6%
7	34	21	0	55	5.5%
8	25	16	0	41	4.1%
9	37	23	0	60	5.9%
10	27	17	0	44	4.4%
11	31	20	0	51	5.1%
12	22	24	0	46	4.6%
13	28	21	0	49	4.9%
14	37	12	0	49	4.9%
15	17	7	0	24	2.4%
16	21	8	0	29	2.9%
17	10	6	0	16	1.6%
>17	1	0	0	1	0.1%
<b>Total</b>	<b>553</b>	<b>456</b>	<b>0</b>	<b>1,009</b>	<b>100.0%</b>
<b>Percent</b>	<b>54.8%</b>	<b>45.2%</b>	<b>0.0%</b>	<b>100.0%</b>	

